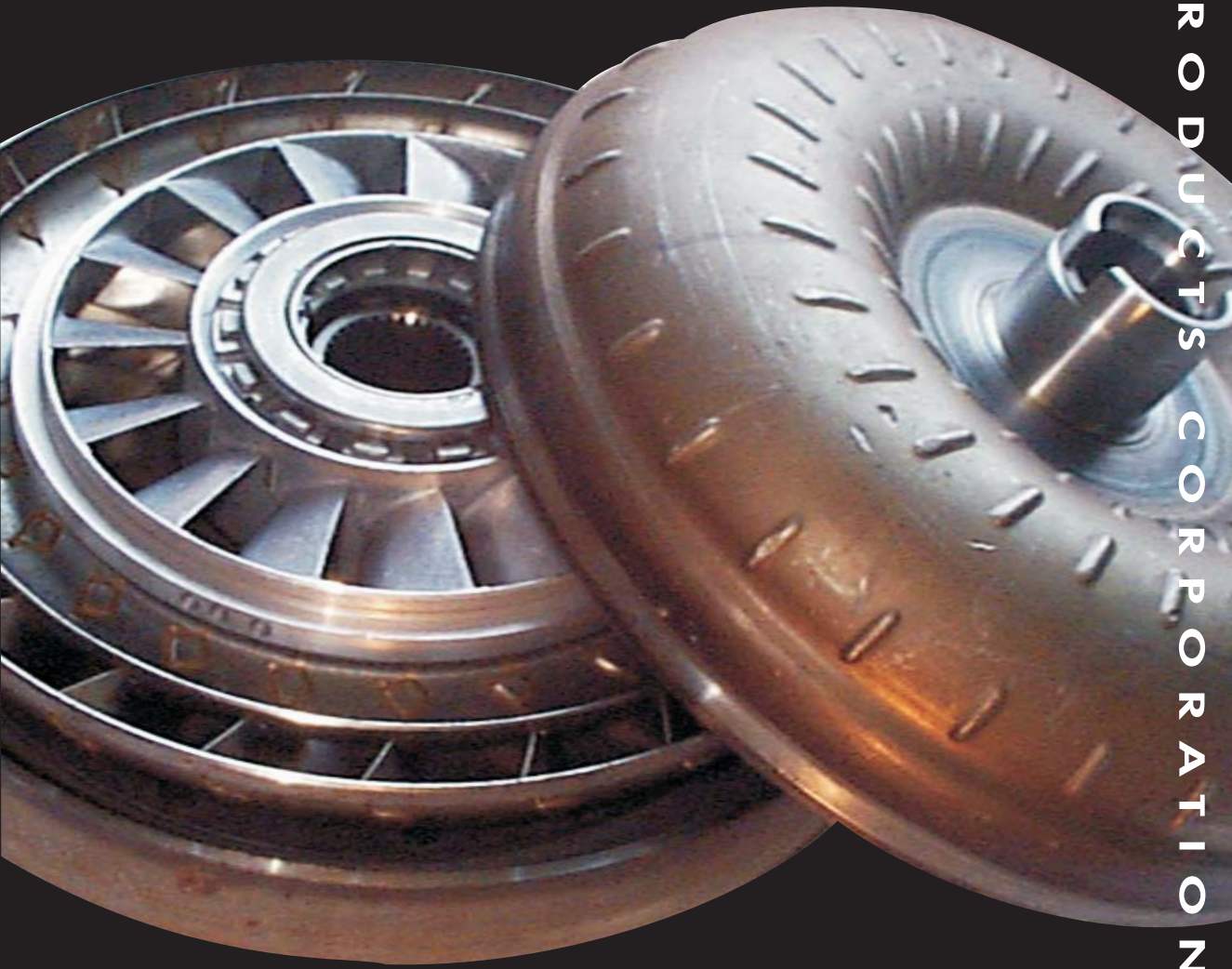




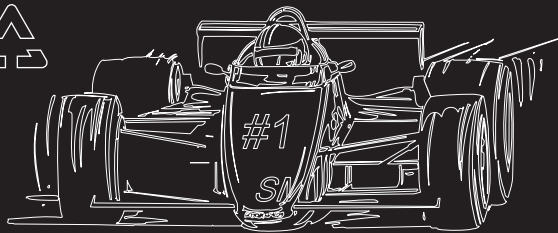
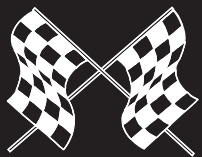
TRI COMPONENT

PRODUCTS CORPORATION



CD-DRAWINGS HIGH PERFORMANCE CONVERTER PARTS

Fifth Edition



973 Brook Avenue
Bronx, New York 10451-4209
www.tricomponent.com
1(800)FONE-TRI
Fax(718)402-2345

**TRI COMPONENT PRODUCTS CORP.
973 Brook Avenue, Bronx, New York 10451-4209**

Fax:7.18 402 2345

**Phone:800 FONE TRI
800 366 3874**

Direct:718 402 2400

**Customer Service.....Ext.
218**

INDEX OF ENGINEERING DRAWINGS OF HIGH PERFORMANCE CONVERTER PARTS

DRAWING #	PART #	DESCRIPTION
CD-001	SW-2-13	Bearing
CD-002	MX-13 Series	Turbine Hub, Opel (Steel)
CD-003	MX-13-8 Series	Turbine Hub, Opel (Steel)
CD-004	MX-13-10 Series	Turbine Hubs, Opel (Steel)
CD-005	MX-13-28 Series	Turbine Hubs, Opel (Steel)
CD-006	MX-13-32 Series	Turbine Hub, Opel (Steel)
CD-007	CX-13 Series	Turbine Hub, Opel (Steel)
CD-008	CX-13 Series	Turbine Hub, Chevrolet (Steel)
CD-009	FX-13GMD	Turbine Hub, Ford to GM Weld Type (Steel)
CD-010	FX-13C	Turbine Hub, Ford to Chrysler (Steel)
CD-011	FX-13GM, FX-13-27HD, FX-13-20	Turbine Hub, Ford to GM (Steel)
CD-012	FX-10-10, FX-10-10D, FX-10-16D	Bracket, Ford
CD-013	FX-10GM, FX-14-27	Bracket & Inner Race to GM Flywheel
CD-014	TW-2-4, TW-2-4R	Bearing, Enclosed & Adapter Ring
CD-015	TX-13-10 Series, TX-14-11	Turbine Hubs & Inner Race for Chrysler 9-1/2" & 10"
CD-016	35400 Series	TH-350 Bearings
CD-017	CW-4-300	Stator Cap, Conversion
CD-018	JX-13 Series/JX-22 Series	Spline Inserts Jatco - Mazda - Subaru - Nissan
CD-019	CW-4E	Washer
CD-020	Various	Pilots, High Performance
CD-021	SX-13-12	Turbine Hub GM 254mm to 30 Splines
CD-022	CX-14CB, SX-14T	Races Opel to Chrysler 904 & GM 254mm
CD-023	Various	Inner Races for Opel & Ford Stator Splined for GM & Chrysler
CD-024	Various	32 Spline Inner Races for Ford C-4 & C-6 Applications in GM Converters
CD-025	CX-5-12	Stator-Opel
CD-026	SX-13-350	Turbine Hub Conversion TH-200 to 350 Lockup
CD-027	CW-4-1HD	Washer
CD-028	MX-13-33 Series	Turbine Hub, Opel
CD-029	SX-10-125	Bracket, GM 254mm
CD-030	FX-10-15	Bracket 10" Ford to 12" Flywheel
CD-031	Various	Bearing Adapters
CD-032	NTA, TRA, TRB Series	Bearing & Races General Purpose
CD-033	BP-1, BP-2	Ballon Plates
CD-034	BC-6HD, BC-6HDA, 34418X	Sprags
CD-035	FX-10-18	Bracket, 11" Ford to GM Flywheel

INDEX OF ENGINEERING DRAWINGS OF HIGH PERFORMANCE CONVERTER PARTS

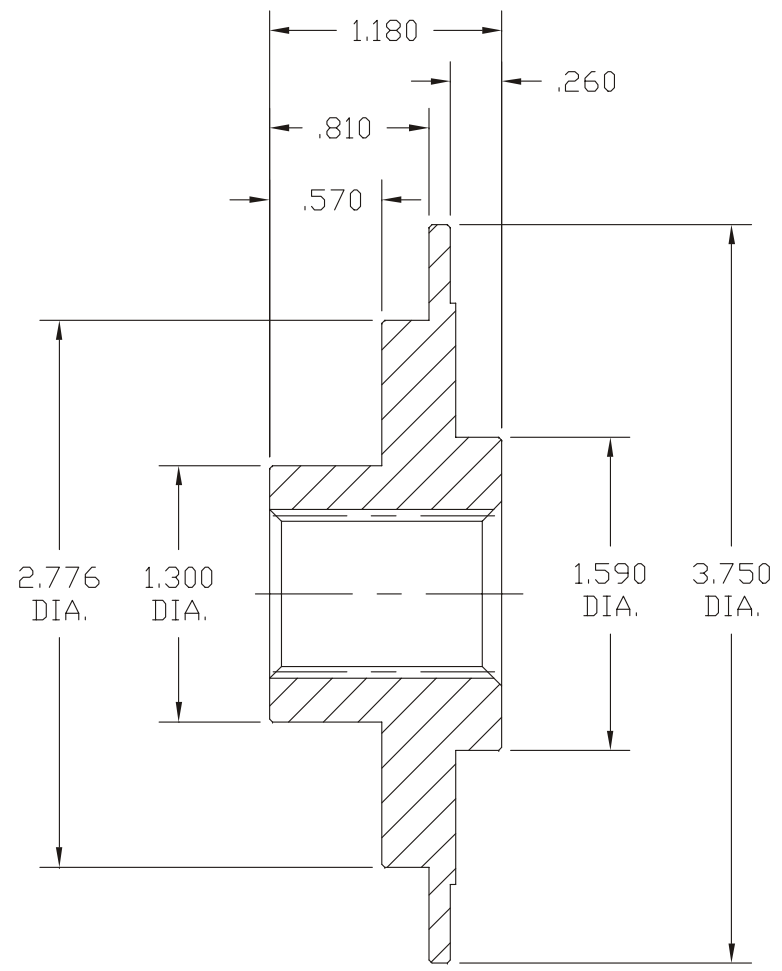




973 Brook Avenue
 Bronx, New York 10451-4208
 www.tricomponent.com
 1(800)FONE-TRI
 Fax(718)402-2467

"PROPRIETARY RIGHTS CLAIMED"

THIS PRINT IS SUPPLIED FOR USE IN
 TRANSACTING BUSINESS WITH
 TRI COMPONENT PRODUCTS.
 ALL OTHERS USES CONTRARY TO THE
 INTEREST OF TRI COMPONENT ARE
 EXPRESSLY FORBIDDEN.



PART NO.	SPLINES
FX-13GMD	30

OTHER SPLINES AVAILABLE.

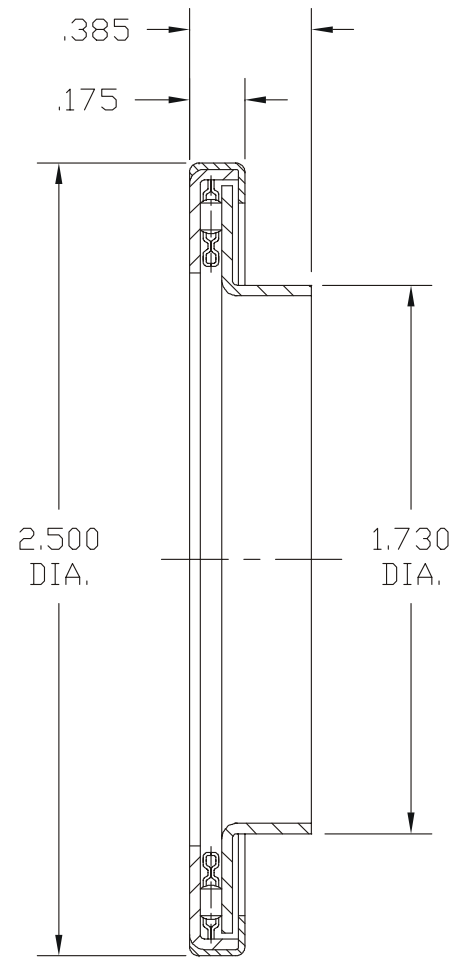


TURBINE HUB, FORD TO GM
 WELD TYPE (STEEL)

PART NUMBER FX-13GMD REF. 1603	DRAWING NUMBER CD-009
---	---------------------------------



973 Brook Avenue
 Bronx, New York 10451-4208
 www.tricomponent.com
 1(800)FONE-TRI
 Fax(718)402-2467



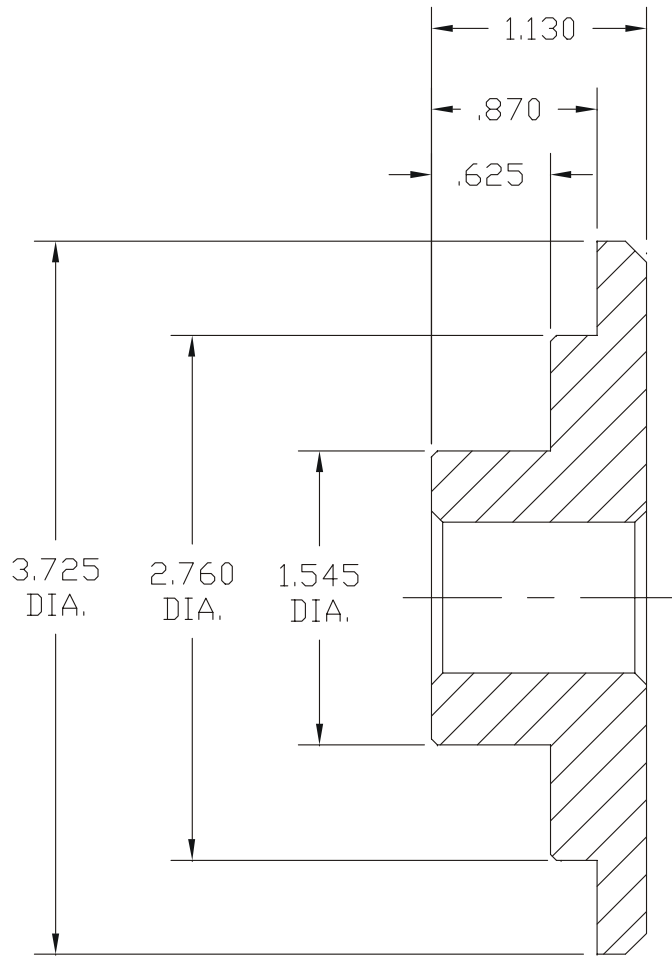
"PROPRIETARY RIGHTS CLAIMED"

THIS PRINT IS SUPPLIED FOR USE IN
 TRANSACTING BUSINESS WITH
 TRI COMPONENT PRODUCTS.
 ALL OTHERS USES CONTRARY TO THE
 INTEREST OF TRI COMPONENT ARE
 EXPRESSLY FORBIDDEN.

A SPECIAL PURPOSE, ENCLOSED BEARING
 DESIGNED FOR MANY USES IN HIGH
 PERFORMANCE APPLICATIONS.
 STRICTLY OE QUALITY LEVEL.



BEARING	
PART NUMBER SW-2-13	DRAWING NUMBER CD-001



"PROPRIETARY RIGHTS CLAIMED"

THIS PRINT IS SUPPLIED FOR USE IN TRANSACTING BUSINESS WITH TRI COMPONENT PRODUCTS. ALL OTHERS USES CONTRARY TO THE INTEREST OF TRI COMPONENT ARE EXPRESSLY FORBIDDEN.

PART NO.	SPLINES	NOTES
MX-13-17	17	POWERGLIDE
MX-13-24	24	CHRYSLER
MX-13-26	26	FORD
MX-13-27	27	GM
MX-13-30	30	GM
MX-13-31	31	FORD

AVAILABLE IN ANY SPLINE CONFIGURATION
STEELS ARE SELECTED FOR MAXIMUM DURABILITY.



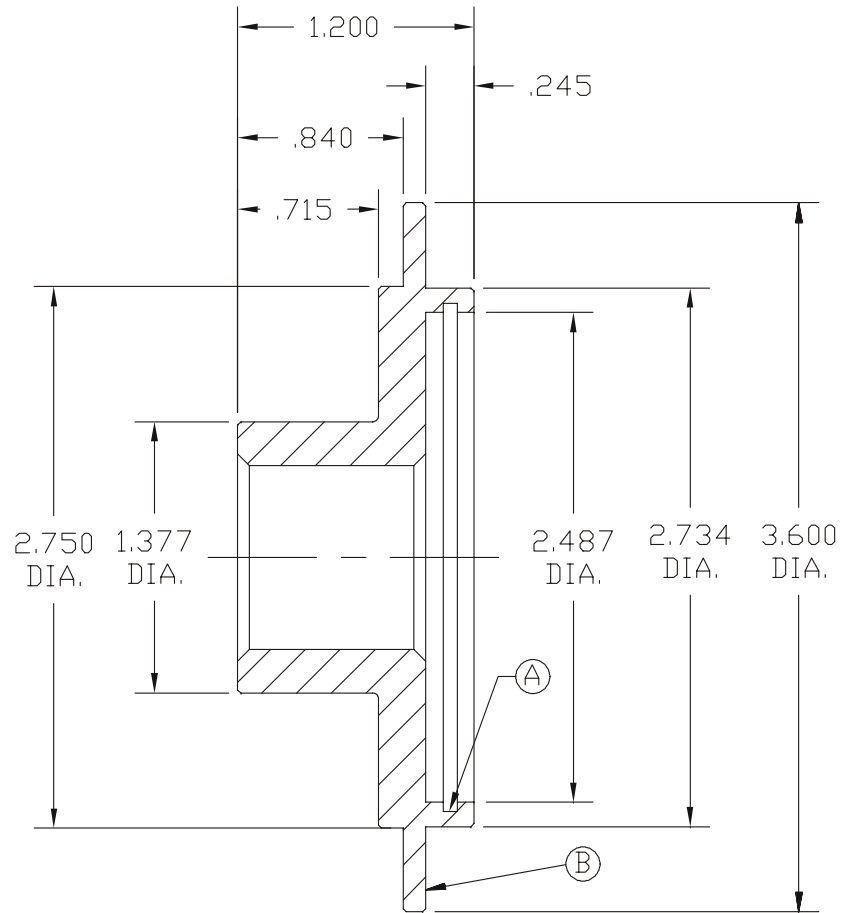
TURBINE HUBS, OPEL
(STEEL)

PART NUMBER
MX-13 SERIES
REF. 1433

DRAWING NUMBER
CD-002



973 Brook Avenue
 Bronx, New York 10461-4209
 www.tricomponent.com
 1(800)FONE-TRI
 Fax(718)402-2467



"PROPRIETARY RIGHTS CLAIMED"

THIS PRINT IS SUPPLIED FOR USE IN TRANSACTING BUSINESS WITH TRI COMPONENT PRODUCTS. ALL OTHERS USES CONTRARY TO THE INTEREST OF TRI COMPONENT ARE EXPRESSLY FORBIDDEN.

PART NO.	SPLINES	NOTES
MX-13-817	17	POWERGLIDE
MX-13-824	24	CHRYSLER
MX-13-826	26	FORD
MX-13-827	27	GM
MX-13-830	30	GM
MX-13-831	31	FORD

AVAILABLE IN ANY SPLINE CONFIGURATION. STEELS ARE SELECTED FOR MAXIMUM DURABILITY. USE: SNAP RING VH-250 (A)

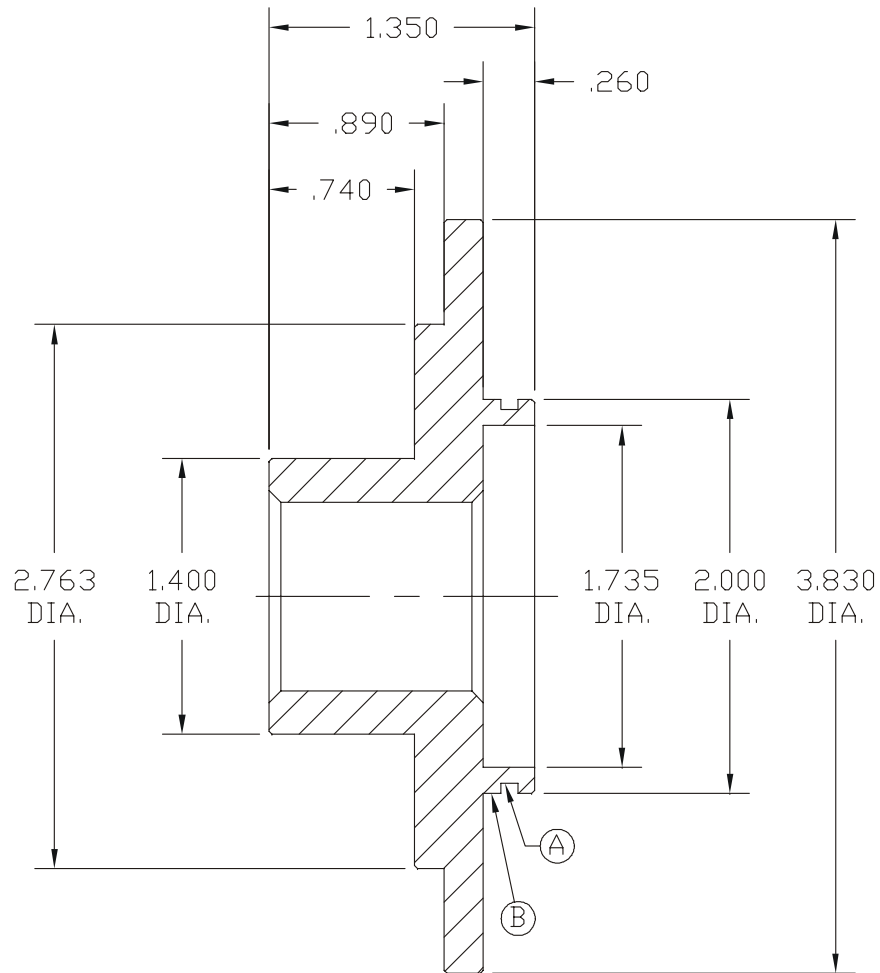
BEARING NTA-2840 (B)



TURBINE HUBS, OPEL
(STEEL)

PART NUMBER
MX-13-8 SERIES
 REF.1587

DRAWING NUMBER
CD-003



973 Brook Avenue
Bronx, New York 10461-4208
www.tricomponent.com
1(800)FONE-TRI
Fax(718)402-2467

"PROPRIETARY RIGHTS CLAIMED"

THIS PRINT IS SUPPLIED FOR USE IN TRANSACTING BUSINESS WITH TRI COMPONENT PRODUCTS. ALL OTHERS USES CONTRARY TO THE INTEREST OF TRI COMPONENT ARE EXPRESSLY FORBIDDEN.

PART NO.	SPLINES	NOTES
MX-13-1017	17	POWERGLIDE
MX-13-1024	24	CHRYSLER
MX-13-1026	26	FORD
MX-13-1027	27	GM
MX-13-1030	30	GM
MX-13-1031	31	FORD

AVAILABLE IN ANY SPLINE CONFIGURATION. STEELS ARE SELECTED FOR MAXIMUM DURABILITY. USE: SNAP RING WH-202 (A)

BEARING NTA-3244 (B)



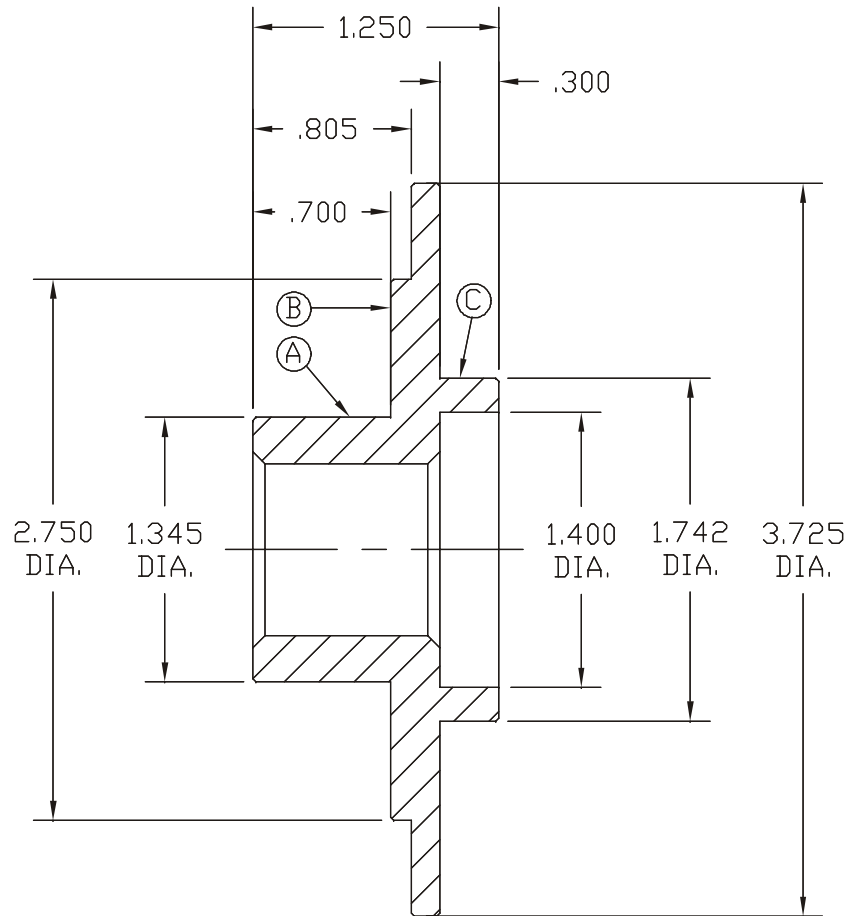
TURBINE HUBS, OPEL
(STEEL)

PART NUMBER
MX-13-10 SERIES
REF.1586

DRAWING NUMBER
CD-004



973 Brook Avenue
 Bronx, New York 10451-4209
 www.tricomponent.com
 1(800)FONE-TRI
 Fax(718)402-2487



"PROPRIETARY RIGHTS CLAIMED"

THIS PRINT IS SUPPLIED FOR USE IN TRANSACTING BUSINESS WITH TRI COMPONENT PRODUCTS. ALL OTHERS USES CONTRARY TO THE INTEREST OF TRI COMPONENT ARE EXPRESSLY FORBIDDEN.

PART NO.	SPLINES	NOTES
MX-13-2817	17	POWERGLIDE
MX-13-2819	19	CHRYSLER
MX-13-2824	24	CHRYSLER
MX-13-2826	26	FORD
MX-13-2827	27	GM
MX-13-2830	30	GM
MX-13-2831	31	FORD

AVAILABLE IN ANY SPLINE CONFIGURATION. STEELS ARE SELECTED FOR MAXIMUM DURABILITY.

USE: BUSHING 86000 (02649)-

-02649(86000) (A)

BEARING NTA-2840 (B)

NTA-2233 (C)



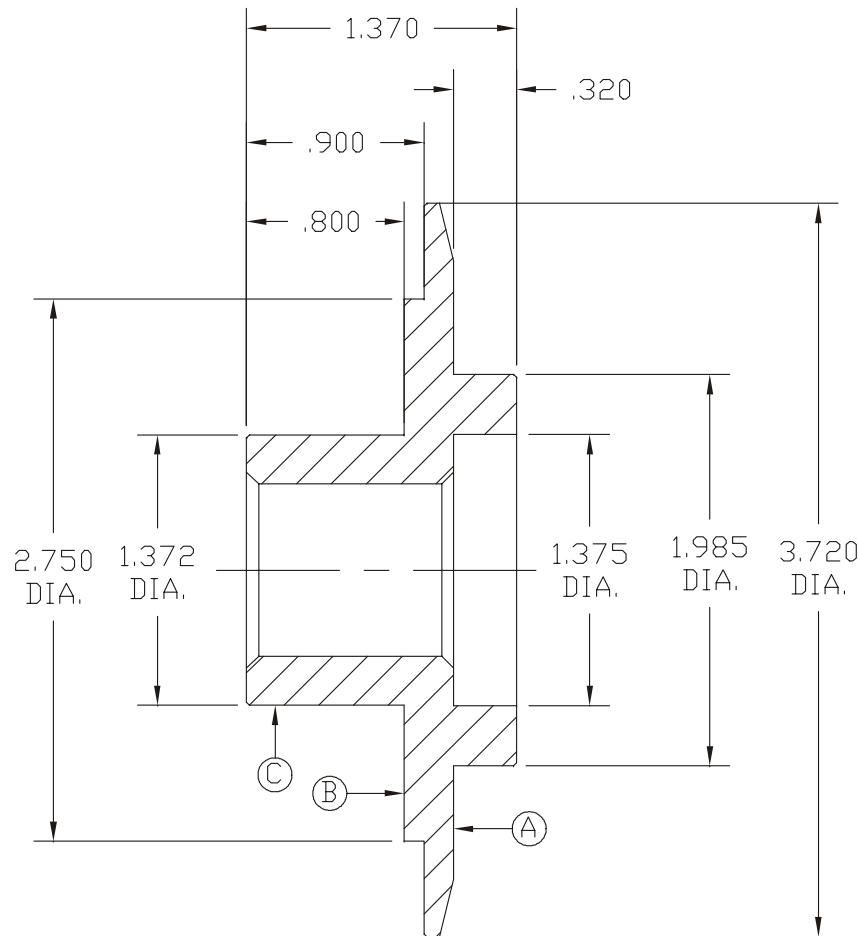
TURBINE HUBS, OPEL
 (STEEL)

PART NUMBER
MX-13-28 SERIES
 REF. 1656

DRAWING NUMBER
CD-005



973 Brook Avenue
 Bronx, New York 10461-4208
 www.tricomponent.com
 1(800)FONE-TRI
 Fax(718)402-2467



"PROPRIETARY RIGHTS CLAIMED"

THIS PRINT IS SUPPLIED FOR USE IN TRANSACTING BUSINESS WITH TRI COMPONENT PRODUCTS. ALL OTHERS USES CONTRARY TO THE INTEREST OF TRI COMPONENT ARE EXPRESSLY FORBIDDEN.

PART NO.	SPLINES	NOTES
MX-13-3217	17	POWERGLIDE
MX-13-3224	24	CHRYSLER
MX-13-3226	26	FORD
MX-13-3227	27	GM
MX-13-3230	30	GM
MX-13-3231	31	FORD

AVAILABLE IN ANY SPLINE CONFIGURATION.

STEELS ARE SELECTED FOR MAXIMUM DURABILITY.

USE: BUSHING 84007 (C)

BEARING NTA-3244 (A)

NTA-2233 (B)



TURBINE HUBS, OPEL
 (STEEL)

PART NUMBER
MX-13-32 SERIES
 REF. 1911

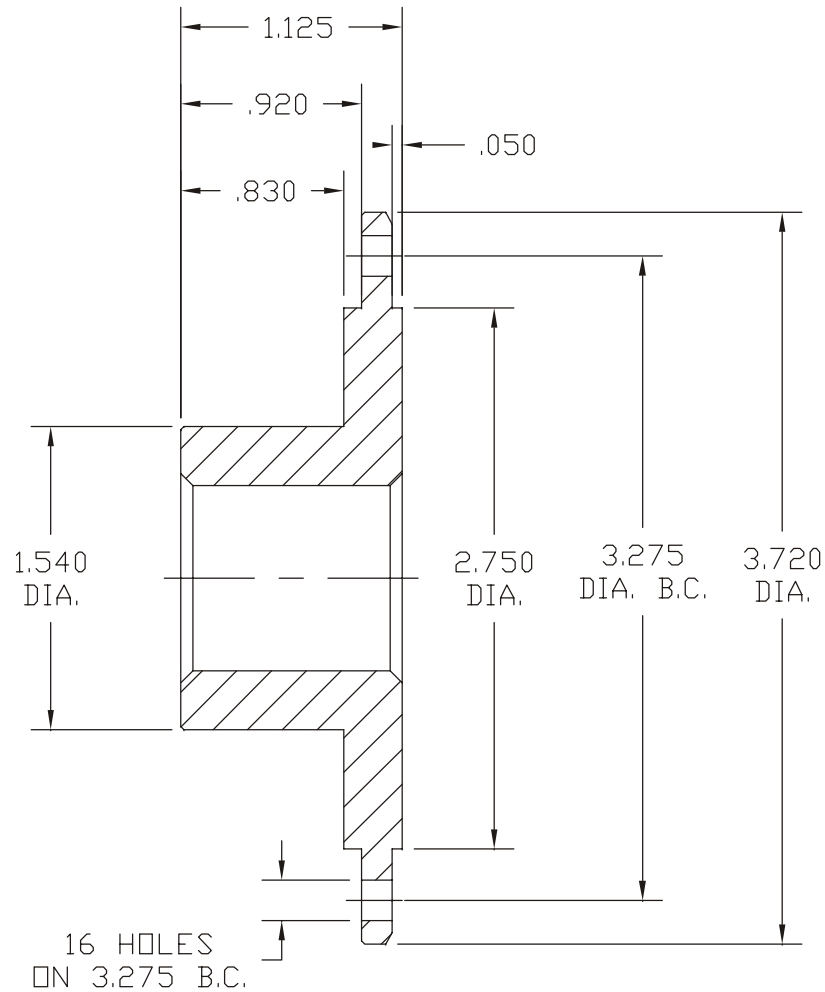
DRAWING NUMBER
CD-006



973 Brook Avenue
 Bronx, New York 10451-4208
 www.tricomponent.com
 1(800)FONE-TRI
 Fax(718)402-2467

"PROPRIETARY RIGHTS CLAIMED"

THIS PRINT IS SUPPLIED FOR USE IN
 TRANSACTING BUSINESS WITH
 TRI COMPONENT PRODUCTS.
 ALL OTHERS USES CONTRARY TO THE
 INTEREST OF TRI COMPONENT ARE
 EXPRESSLY FORBIDDEN.



PART NO.	SPLINES	NOTES
CX-13-17	17	POWERGLIDE
CX-13-24	24	CHRYSLER
CX-13-26	26	FORD
CX-13-27	27	GM
CX-13-27C	27	CHRYSLER
CX-13-30	30	GM
CX-13-31	31	FORD

AVAILABLE IN ANY SPLINE CONFIGURATION.
 STEELS ARE SELECTED FOR MAXIMUM DURABILITY.



TURBINE HUBS, OPEL
 (STEEL)

PART NUMBER
CX-13 SERIES
 REF. 898

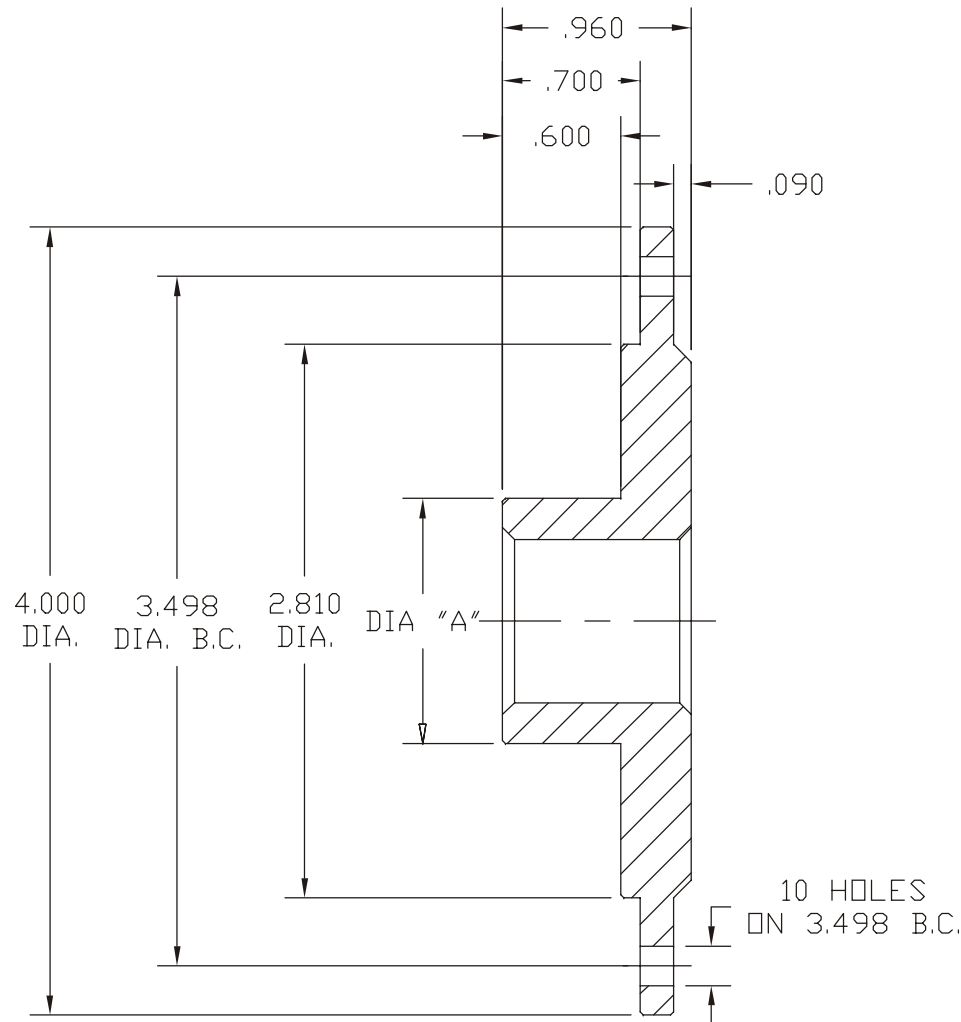
DRAWING NUMBER
CD-007



973 Brook Avenue
 Bronx, New York 10451-4208
 www.tricomponent.com
 1(800)FONE-TRI
 Fax(718)402-2467

"PROPRIETARY RIGHTS CLAIMED"

THIS PRINT IS SUPPLIED FOR USE IN
 TRANSACTING BUSINESS WITH
 TRI COMPONENT PRODUCTS.
 ALL OTHERS USES CONTRARY TO THE
 INTEREST OF TRI COMPONENT ARE
 EXPRESSLY FORBIDDEN.



PART NO.	DIA. "A"	SPLINES	UNIT
CX-13S	1.245	17	P.G.
CX-13-1SP	1.245	30	P.G.
CX-13-1HT	1.310	30	350

OTHER SPLINES AVAILABLE.



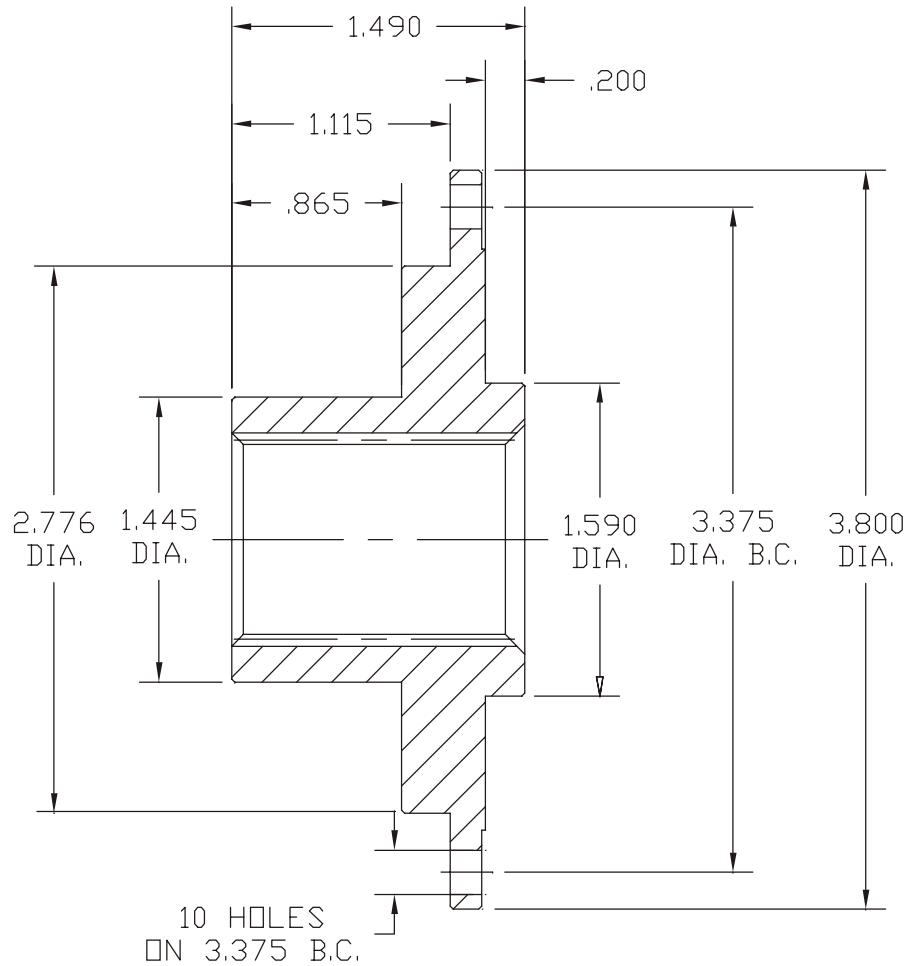
TURBINE HUBS, CHEVROLET
 (STEEL)

PART NUMBER
CX-13 SERIES
 REF. 900

DRAWING NUMBER
CD-008



973 Brook Avenue
 Bronx, New York 10451-4208
 www.tricomponent.com
 1(800)FONE-TRI
 Fax(718)402-2467



"PROPRIETARY RIGHTS CLAIMED"

THIS PRINT IS SUPPLIED FOR USE IN
 TRANSACTING BUSINESS WITH
 TRI COMPONENT PRODUCTS.
 ALL OTHERS USES CONTRARY TO THE
 INTEREST OF TRI COMPONENT ARE
 EXPRESSLY FORBIDDEN.

PART NO.	SPLINES
FX-13C	24



TURBINE HUB, FORD TO CHRYSLER
 (STEEL)

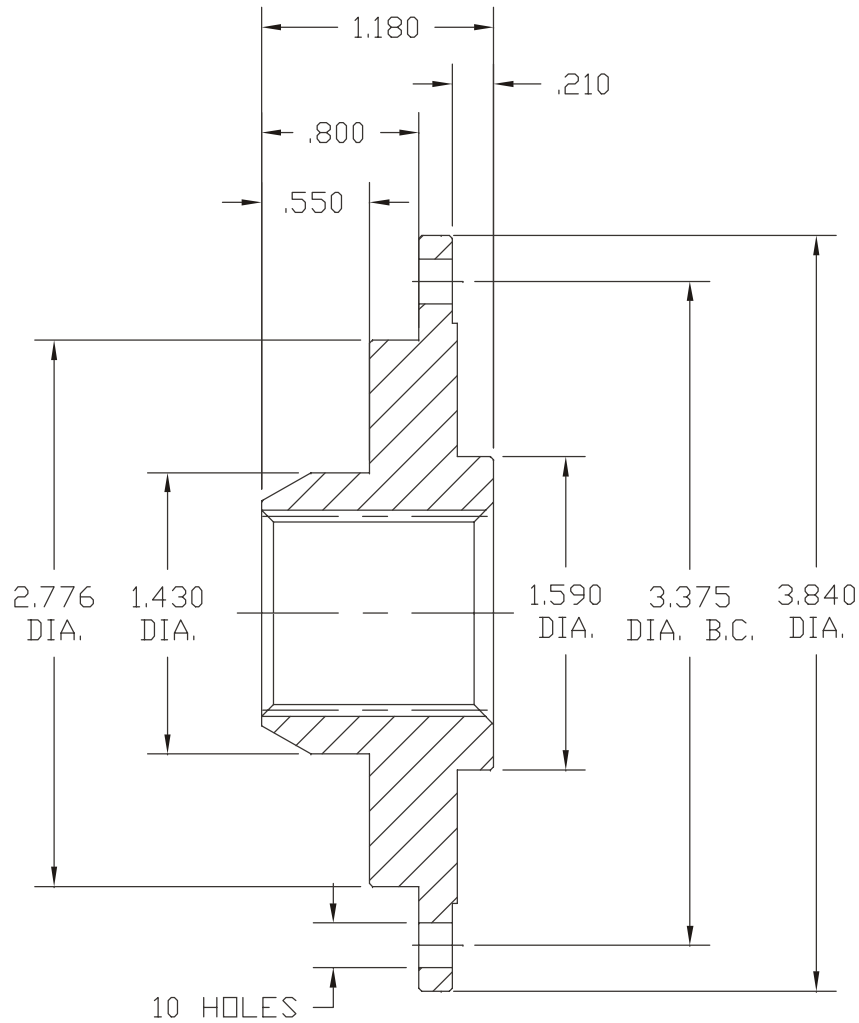
PART NUMBER FX-13C REF. 1327	DRAWING NUMBER CD-010
---	---------------------------------



973 Brook Avenue
 Bronx, New York 10461-4208
 www.tricomponent.com
 1(800)FONE-TRI
 Fax(718)402-2467

"PROPRIETARY RIGHTS CLAIMED"

THIS PRINT IS SUPPLIED FOR USE IN
 TRANSACTING BUSINESS WITH
 TRI COMPONENT PRODUCTS.
 ALL OTHERS USES CONTRARY TO THE
 INTEREST OF TRI COMPONENT ARE
 EXPRESSLY FORBIDDEN.



PART NO.	SPLINES
FX-13 GM	30
FX-13-27HD	27
FX-13-2D	31

OTHER SPLINES AVAILABLE.

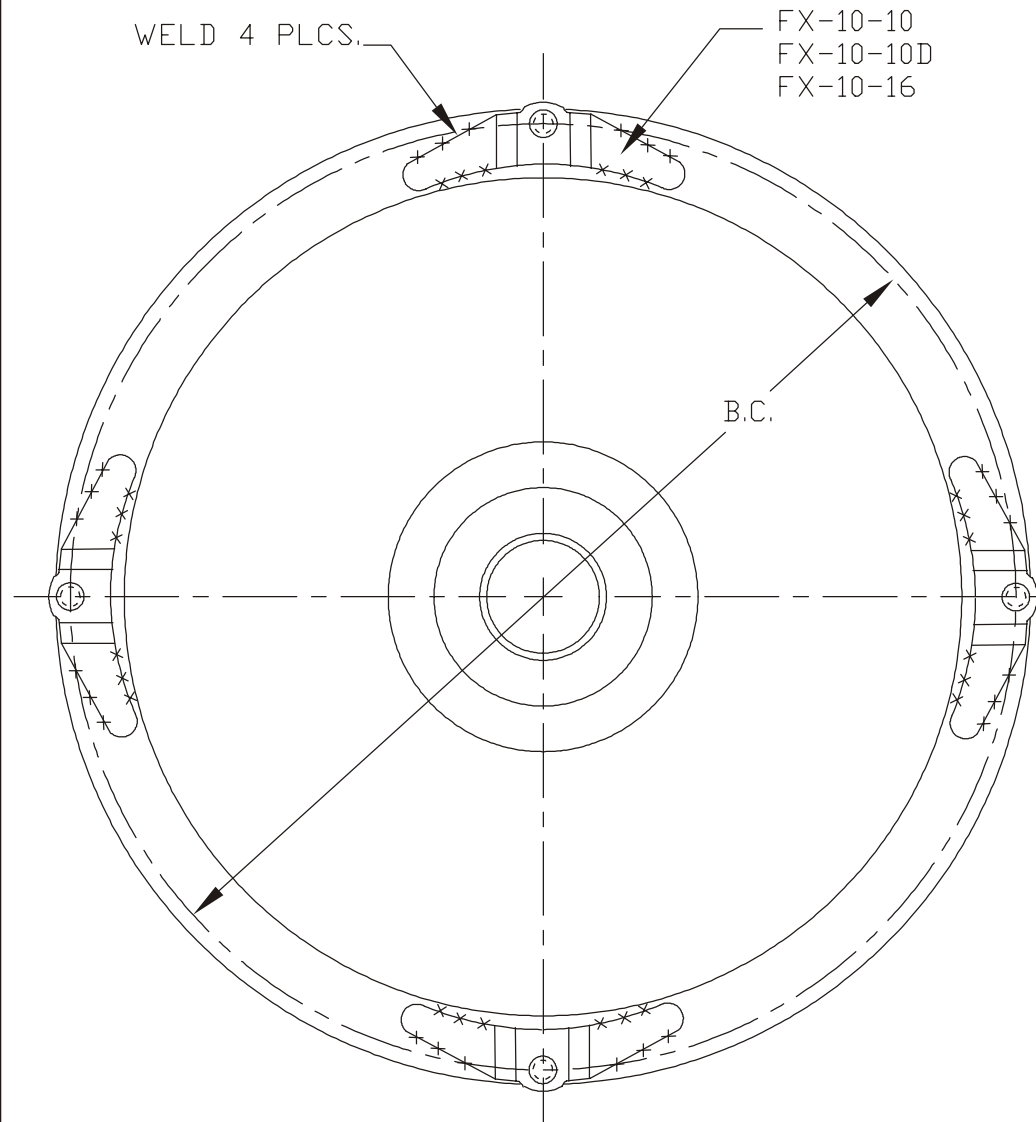


TURBINE HUBS, FORD TO GM
 (STEEL)

PART NUMBER FX-13GM, FX-13-27HD, FX-13-20	DRAWING NUMBER CD-011
REF. 999, 1598	



973 Brook Avenue
 Bronx, New York 10451-4208
 www.tricomponent.com
 1(800)FONE-TRI
 Fax(718)402-2467



"PROPRIETARY RIGHTS CLAIMED"

THIS PRINT IS SUPPLIED FOR USE IN
 TRANSACTING BUSINESS WITH
 TRI COMPONENT PRODUCTS.
 ALL OTHERS USES CONTRARY TO THE
 INTEREST OF TRI COMPONENT ARE
 EXPRESSLY FORBIDDEN.

AN EASY TO USE UNIVERSAL BRACKET
 TO ADAPT 11" FORD CONVERTER
 TO 12" FLYWHEEL. IDEAL
 FOR HIGH PERFORMANCE CONVERSIONS.

PART NO.	DESCRIPTION
FX-10-10	7/16-20 THREAD*
FX-10-10D	5/16 DIA. UNTHREADED HOLE
FX-10-16	3/8-24 THREAD*

* USE SUITABLE ALLEN SETSCREWS
 AS STUDS.

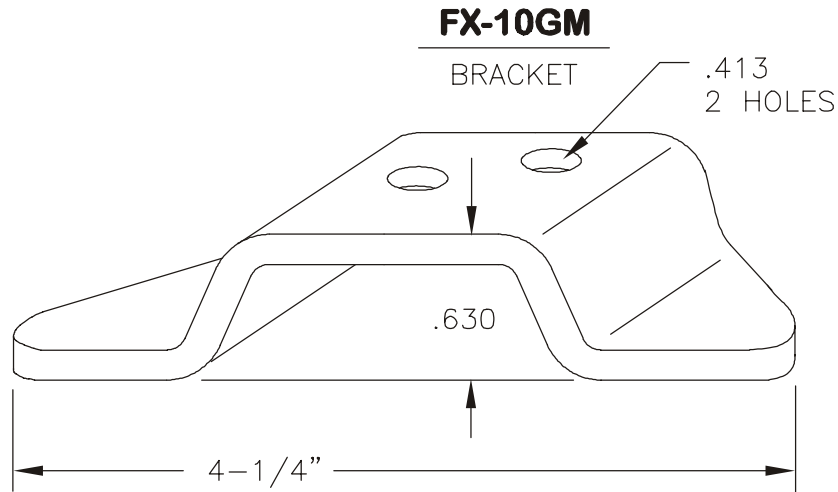


BRACKET, FORD

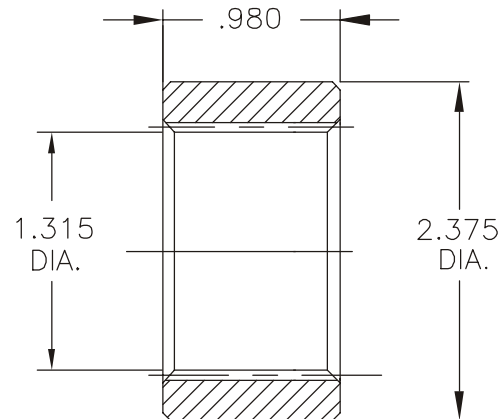
PART NUMBERS FX-10-10, FX-10-10D, FX-10-16D	DRAWING NUMBER CD-012
--	---------------------------------



973 Brook Avenue
Bronx, New York 10451-4208
www.tricomponent.com
1(800)FONE-TRI
Fax(718)402-2467



COMPANION PART **FX-14-27**
INNER RACE, 27 TEETH FOR GM



"PROPRIETARY RIGHTS CLAIMED"

THIS PRINT IS SUPPLIED FOR USE IN
TRANSACTIONING BUSINESS WITH TRI
COMPONENT PRODUCTS. ALL OTHER USES
CONTRARY TO THE INTEREST OF TRI
COMPONENT ARE EXPRESSLY FORBIDDEN.

A HEAVY DUTY, SPECIAL BRACKET
WELDS TO FORD 10" CONVERTER,
BOLTS TO ANY GM FLYWHEEL
BECAUSE OF DUAL PATTERN
ON THE BRACKET.

TRI COMPONENT WILL MAKE
ANY STYLE OF SPECIAL BRACKET
YOU MAY REQUIRE.



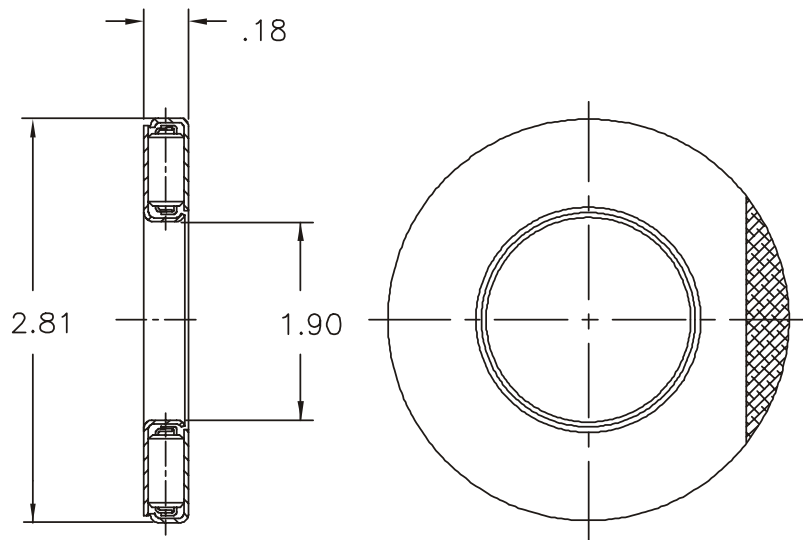
**BRACKET 10" FORD TO GM
FLYWHEEL & INNER RACE**

PART NUMBER
FX-10GM, FX-14-27

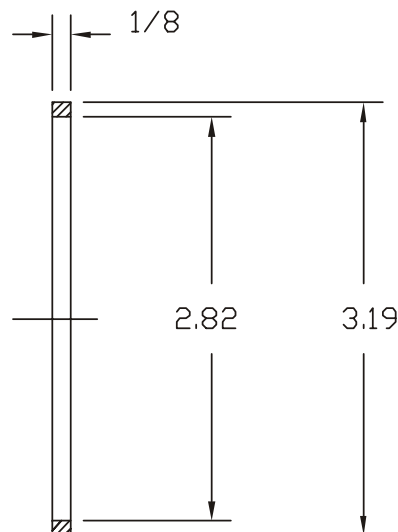
DRAWING NUMBER
CD-013



973 Brook Avenue
 Bronx, New York 10451-4289
 www.tricomponent.com
 1(800)FONE-TRI
 Fax(718)402-2467



TW-2-4 BEARING



TW-2-4R ADAPTER RING

LETS YOU ADAPT THIS BEARING TO MANY APPLICATIONS.
 JUST WELD IN PLACE, IN ANY LOCATION, AND DROP IN BEARING.

"PROPRIETARY RIGHTS CLAIMED"

THIS PRINT IS SUPPLIED FOR USE IN
 TRANSACTING BUSINESS WITH
 TRI COMPONENT PRODUCTS.
 ALL OTHERS USES CONTRARY TO THE
 INTEREST OF TRI COMPONENT ARE
 EXPRESSLY FORBIDDEN.

- ORIGINAL APPLICATION:
 CHRYSLER 604 FWD 254mm LOCKUP
- EAGLE PREMIER
 - CARAVAN
 - IMPERIAL
 - FIFTH AVENUE

- ADDITIONAL USES
- HIGH PERFORMANCE
 - HONDA
 - MITSUBISHI
 - AND MANY MORE...
- LIMITED ONLY BY YOUR IMAGINATION.



**BEARING, ENCLOSED &
 ADAPTER RING**

PART NUMBER
TW-2-4, TW-2-4R

DRAWING NUMBER
CD-014

SOLID STEEL TURBINE HUBS TO ADAPT CHRYSLER F.W.D. CONVERTERS TO HIGH PERFORMANCE.

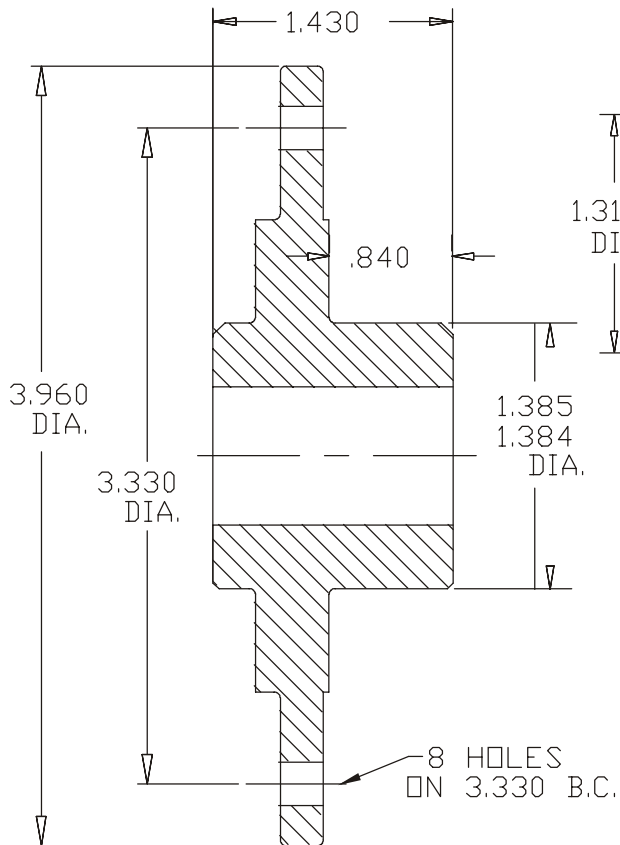
SPECIAL INNER RACE WITH 27 TEETH FOR ADAPTATION TO LARGE GM SPLINES.



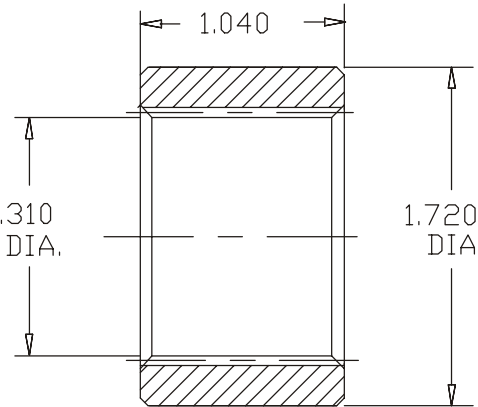
973 Brook Avenue
Bronx, New York 10451-4209
www.tricomponent.com
1(800)FONE-TRI
Fax(718)402-2467

"PROPRIETARY RIGHTS CLAIMED"

THIS PRINT IS SUPPLIED FOR USE IN TRANSACTING BUSINESS WITH TRI COMPONENT PRODUCTS. ALL OTHER USES CONTRARY TO THE INTEREST OF TRI COMPONENT ARE EXPRESSLY FORBIDDEN.



TX-13-10 SERIES



TX-14-11

USE WITH:
TB-18-4 BUSHING
TW-2-4 BEARING

PART NO.	SPLINES	NOTES
TX-13-1017	17	G.M.
TX-13-1024	24	CHRYSLER
TX-13-1026	26	FORD
TX-13-1027	27	G.M.
TX-13-1027C	27	CHRYSLER
TX-13-1030	30	G.M.
TX-13-1031	31	FORD

AVAILABLE IN ANY SPLINE CONFIGURATION

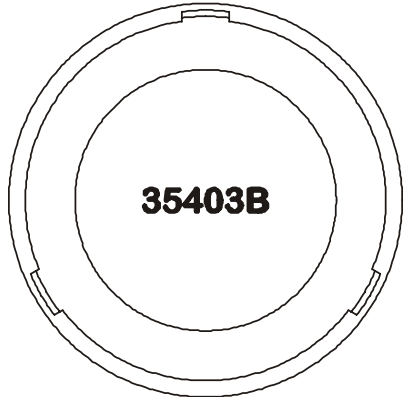
CHRYSLER 9 1/2" & 10" CONVERTERS ARE IDEAL FOR USE IN PERFORMANCE. THEY ARE FURNACE BRAZED AND PLENTIFUL IN SUPPLY. TRI WILL PRODUCE ANY ADDITIONAL PARTS YOU MAY NEED TO ADAPT THESE VERSATILE UNITS.



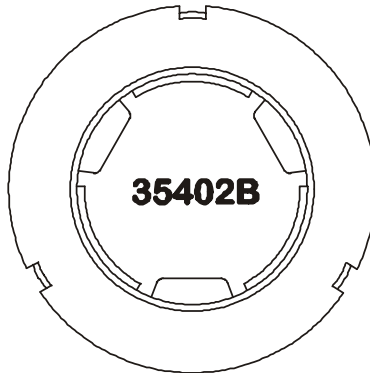
TURBINE HUBS & INNER RACE FOR CHRYSLER 9-1/2" & 10"

PART NUMBER
TX-13-10 SERIES,
TX-14-11 REF. 2248

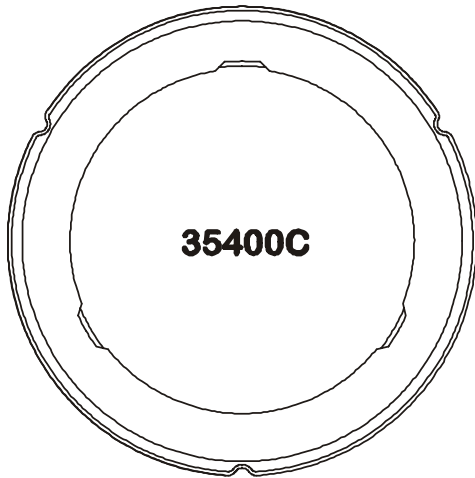
DRAWING NUMBER
CD-015



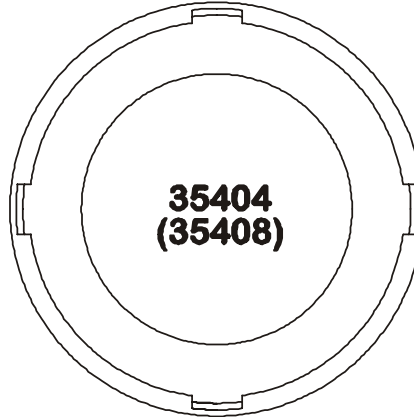
35403B



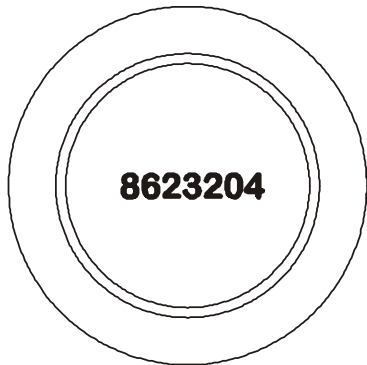
35402B



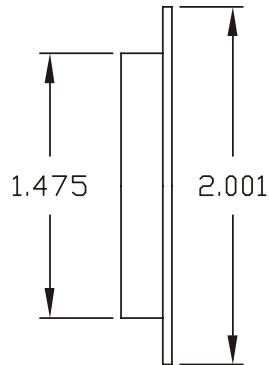
35400C



**35404
(35408)**



8623204



8623204 IS USED
IN TH400 CENTER
SUPPORT-TO-SUN-
GEAR AND IS
USEFUL IN ADAPTING
MANY SIZE BEARINGS.



973 Brook Avenue
Bronx, New York 10451-4208
www.tricomponent.com
1(800)FONE-TRI
Fax(718)402-2467

"PROPRIETARY RIGHTS CLAIMED"

THIS PRINT IS SUPPLIED FOR USE IN
TRANSACTIONING BUSINESS WITH TRI
COMPONENT PRODUCTS. ALL OTHER USES
CONTRARY TO THE INTEREST OF TRI
COMPONENT ARE EXPRESSLY FORBIDDEN.

TRI#	35400C	35403B	35402B	35404 (35408)
OE#	9436841	9436852	1256852	9427759 (8640228)
I.D.	2.125	1.760	1.670	1.670
O.D.	2.890	2.635	2.465	2.500
EFF. THICK.	.140	.140	.140	.140



TH-350 BEARINGS

PART NUMBER
35400 SERIES

DRAWING NUMBER
CD-016



973 Brook Avenue
Bronx, New York 10451-4209
www.tricomponent.com
1(800)FONE-TRI
Fax(718)402-2467

"PROPRIETARY RIGHTS CLAIMED"

THIS PRINT IS SUPPLIED FOR USE IN TRANSACTING BUSINESS WITH TRI COMPONENT PRODUCTS. ALL OTHER USES CONTRARY TO THE INTEREST OF TRI COMPONENT ARE EXPRESSLY FORBIDDEN.

ANOTHER CORE SAVER™ FROM TRI COMPONENT PHENOLIC STATOR WASHER CW-4-300 ENABLES POWERGLIDE STATORS TO BE USED DIRECTLY IN BUICK-OLDSMOBILE-PONTIAC 350 CONVERTERS.

INSTRUCTIONS: REMOVE ORIGINAL FRONT STATOR WASHER AND REPLACE WITH CW-4-300. MAKE SURE THAT CW-4-4 REAR ALUMINUM WASHER IS IN PLACE TO ADAPT TO THE STANDARD SW-2-1, SW-2-4 & SW-2-6 COMBINATION.

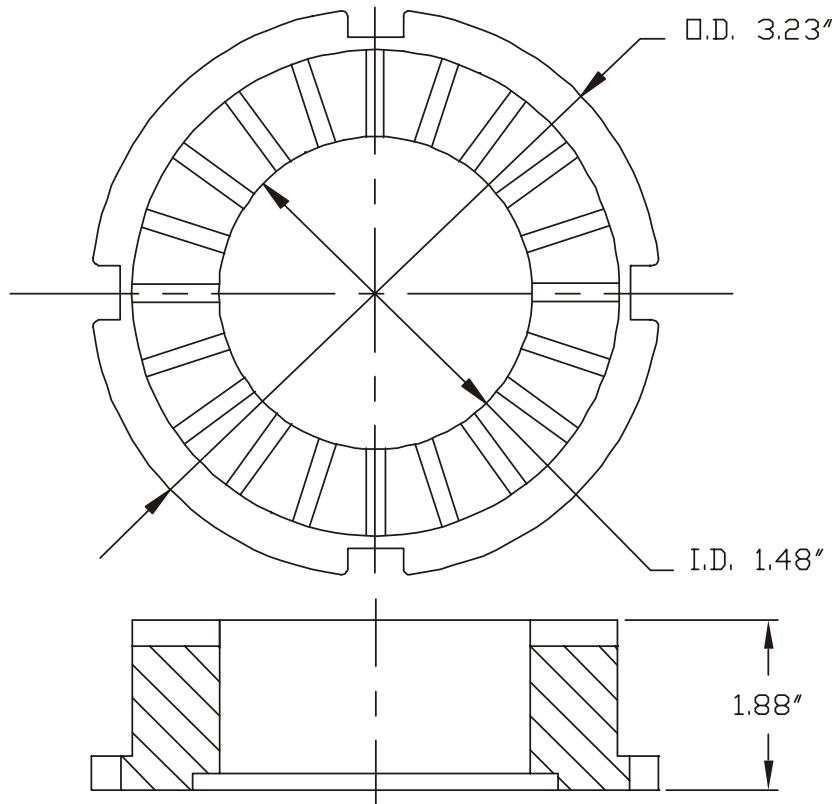
A HIGH QUALITY MOLDED PHENOLIC THRUST PLATE. MADE OF OE GRADE MATERIALS AND PROCESSED TO ASSURE LONGEST POSSIBLE LIFE. A PROVEN WINNER IN THOUSANDS OF APPLICATIONS.

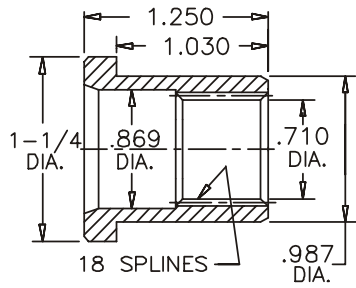


STATOR CAP, CONVERSION

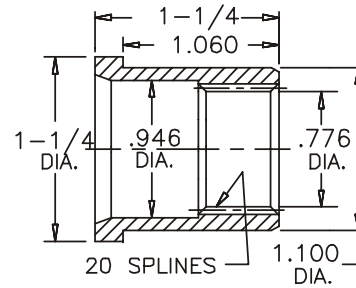
PART NUMBER
CW-4-300

DRAWING NUMBER
CD-017

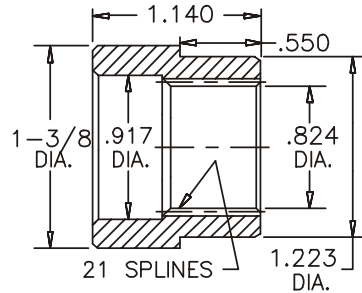




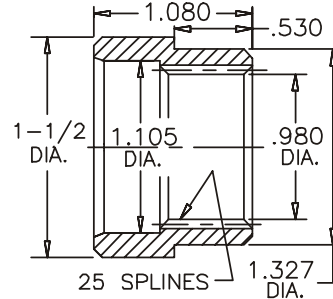
JX-13-18M



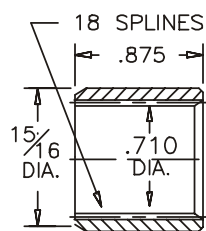
JX-13-20



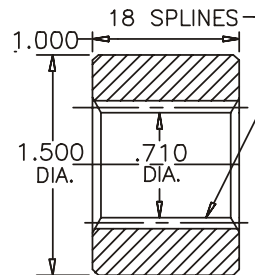
JX-13-21



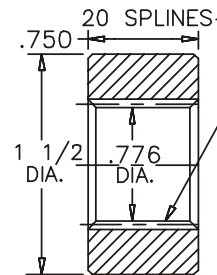
JX-13-25



JX-13-18X

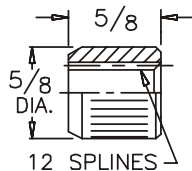


JX-13-18D

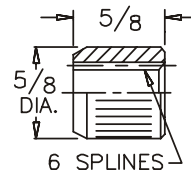


JX-13-20LE

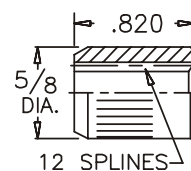
PUMP DRIVE SPLINE INSERTS



JX-22-100



JX-22-101



JX-22-102



973 Brook Avenue
Bronx, New York 10451-4208
www.tricomponent.com
1(800)FONE-TRI
Fax(718)402-2467

"PROPRIETARY RIGHTS CLAIMED"

THIS PRINT IS SUPPLIED FOR USE IN TRANSACTING BUSINESS WITH TRI COMPONENT PRODUCTS. ALL OTHER USES CONTRARY TO THE INTEREST OF TRI COMPONENT ARE EXPRESSLY FORBIDDEN.

JX-22-100, JX-22-101, JX-22-102 PUMP DRIVE SPLINES WITH PRECISION FORMED O.D. SERRATIONS. JUST DRILL & REAM 5/8 AND PRESS FIT - NO WELDING. HARDENED FOR LONG LIFE.

TRI COMPONENT MANUFACTURES A FULL RANGE OF INSERTS TO REPAIR JATCO TURBINE HUBS. THE STYLES WITH HEADS ESPECIALLY DESIGNED TO SALVAGE LOCKUPS. HIGH STRENGTH EASY WELDING STEEL IS USED. A 99% NICKEL WELDING ROD IS RECOMMENDED FOR THE MANY DUCTILE IRON HUBS USED BY JATCO.



SPLINE INSERTS

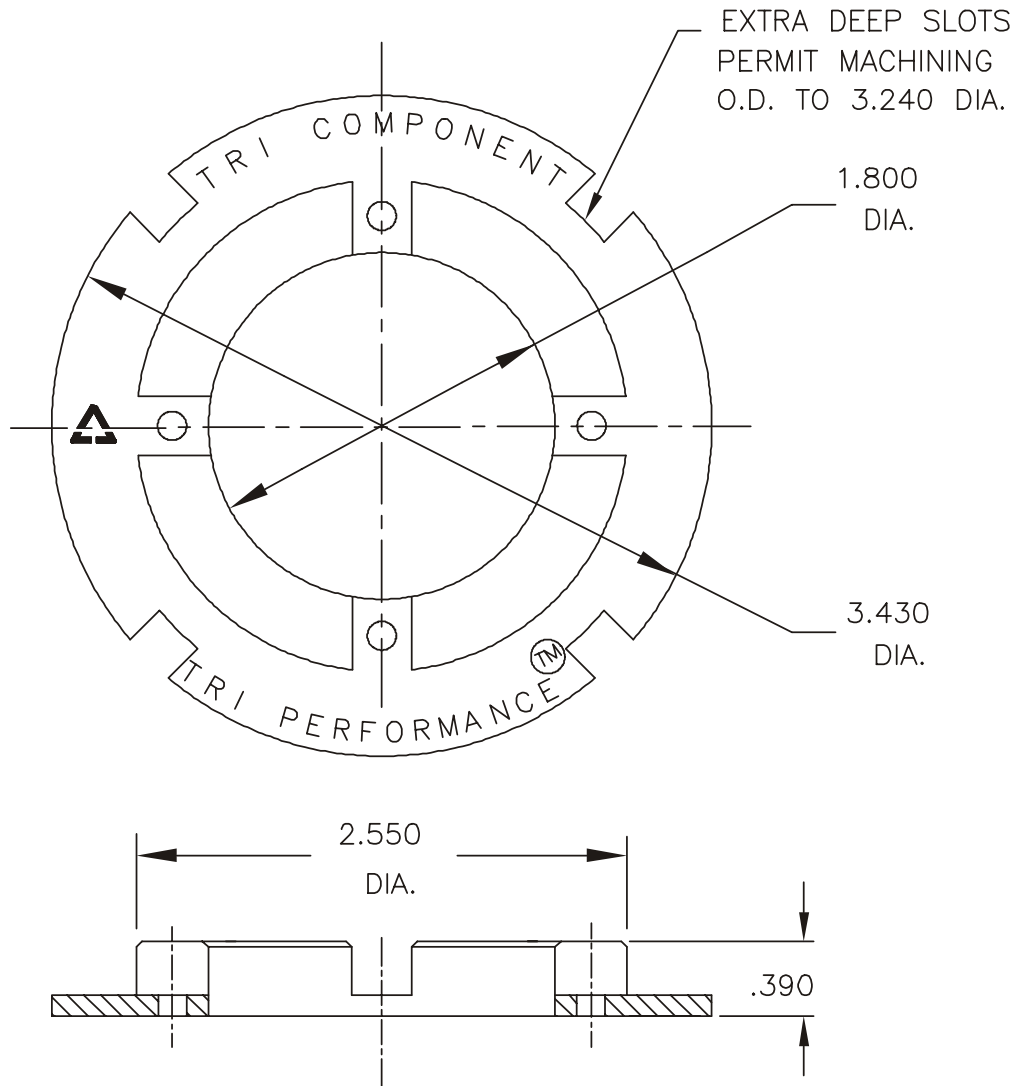
JATCO - MAZDA - SUBARU - NISSAN

PART NUMBER
JX-13 Series
JX-22 Series

DRAWING NUMBER
CD-018



973 Brook Avenue
Bronx, New York 10451-4209
www.tricomponent.com
1(800)FONE-TRI
Fax(718)402-2467



"PROPRIETARY RIGHTS CLAIMED"

THIS PRINT IS SUPPLIED FOR USE IN TRANSACTING BUSINESS WITH TRI COMPONENT PRODUCTS. ALL OTHER USES CONTRARY TO THE INTEREST OF TRI COMPONENT ARE EXPRESSLY FORBIDDEN.

AN ALUMINUM WASHER FOR USE WITH OPEL STATORS. FUNCTIONS WITH THE "DIODE", CHRYSLER AND POWERGLIDE CAM ADAPTATIONS. ALSO FOR USE WITH BC-6HD BORG WARNER STYLE SPRAG. MUST BE MACHINED BY USER FOR THE PARTICULAR APPLICATION.



WASHER

PART NUMBER
CW-4E

DRAWING NUMBER
CD-019

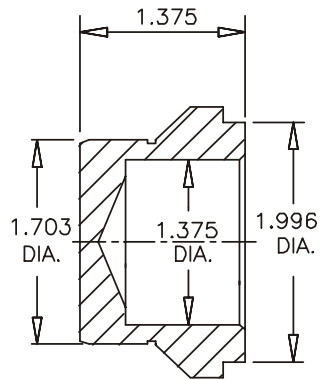


973 Brook Avenue
Bronx, New York 10451-4208
www.tricomponent.com
1(800)FONE-TRI
Fax(718)402-2467

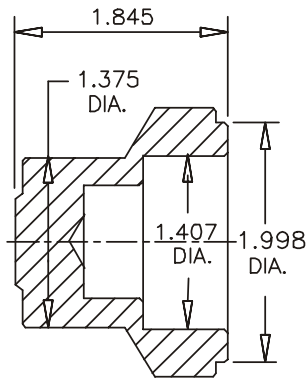
"PROPRIETARY RIGHTS CLAIMED"

THIS PRINT IS SUPPLIED FOR USE IN TRANSACTING BUSINESS WITH TRI COMPONENT PRODUCTS. ALL OTHER USES CONTRARY TO THE INTEREST OF TRI COMPONENT ARE EXPRESSLY FORBIDDEN.

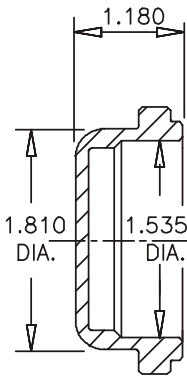
TRI SUPPLIES PILOTS FOR ALL APPLICATIONS



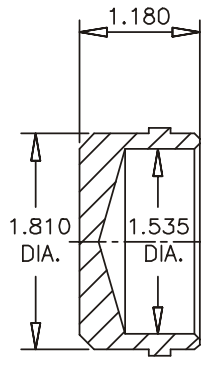
SX-23HP, (PRECISION FINISHED)
SX-23HPX, (UNFINISHED)



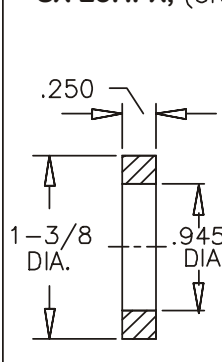
FX-17-9



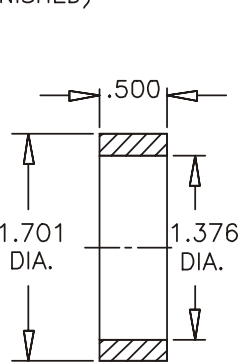
TX-17-3



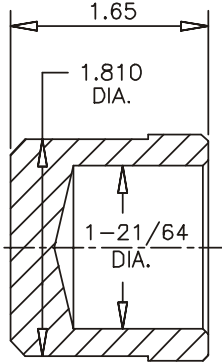
TX-23-1



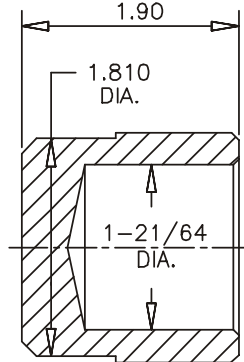
MX-17 PRFS



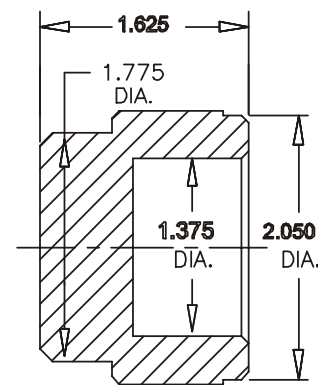
MX-17 PRGM



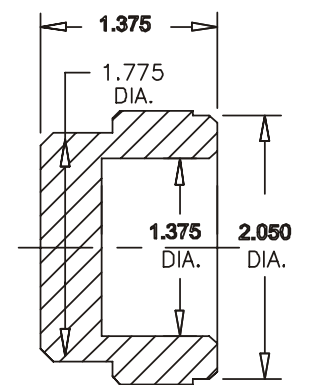
MX-17F



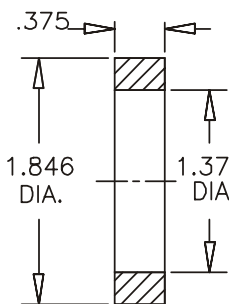
MX-17GM



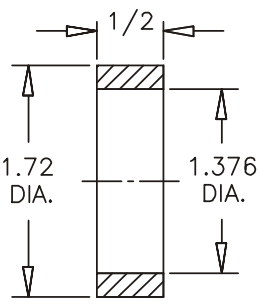
SX-23HPA



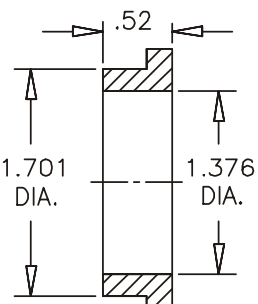
SX-23D



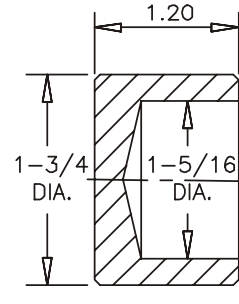
MX-17 PRFL



FX-17-7



FX-17GM



SX-23A



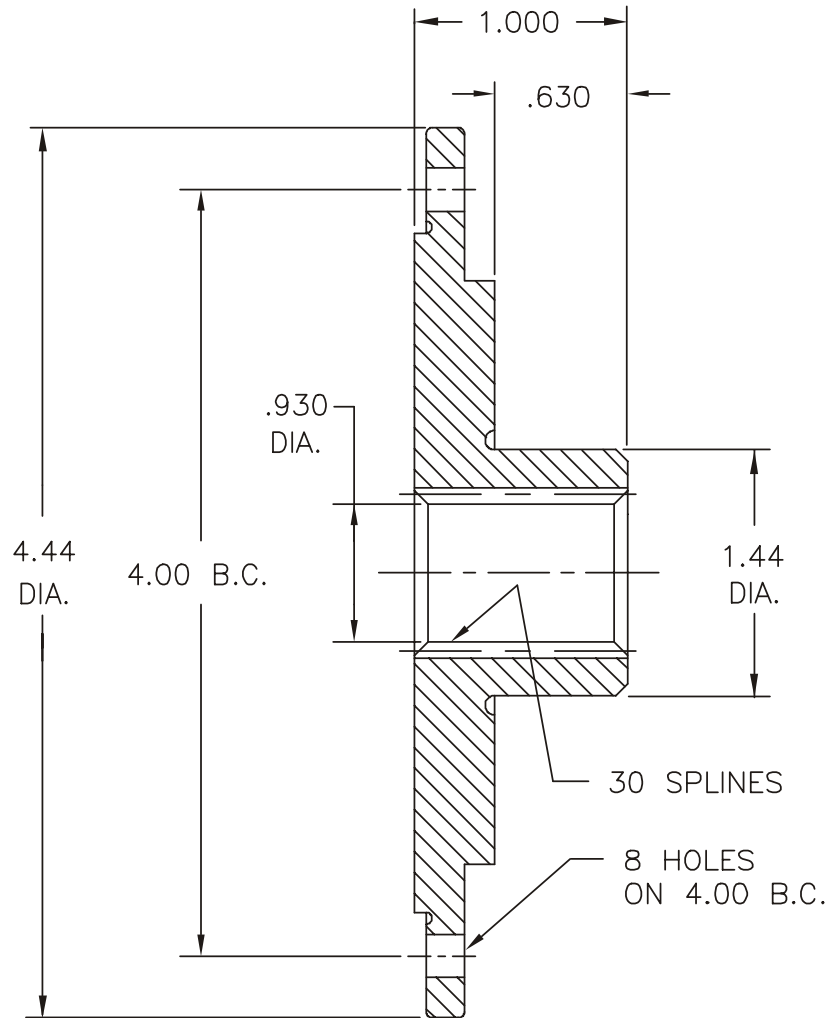
**PILOTS,
HIGH PERFORMANCE**

PART NUMBER
VARIOUS

DRAWING NUMBER
CD-020



973 Brook Avenue
Bronx, New York 10451-4209
www.tricomponent.com
1(800)FONE-TRI
Fax(718)402-2467



"PROPRIETARY RIGHTS CLAIMED"

THIS PRINT IS SUPPLIED FOR USE IN TRANSACTING BUSINESS WITH TRI COMPONENT PRODUCTS. ALL OTHER USES CONTRARY TO THE INTEREST OF TRI COMPONENT ARE EXPRESSLY FORBIDDEN.

CONTACT YOUR TRI REP FOR ADDITIONAL CONFIGURATIONS.

THIS SPECIAL TURBINE HUB WILL ALLOW YOU TO ADAPT 254mm (TH125) CONVERTERS TO 30 SPLINE GM HIGH PERFORMANCE APPLICATIONS.

STEELS ARE SELECTED FOR MAXIMUM DURABILITY



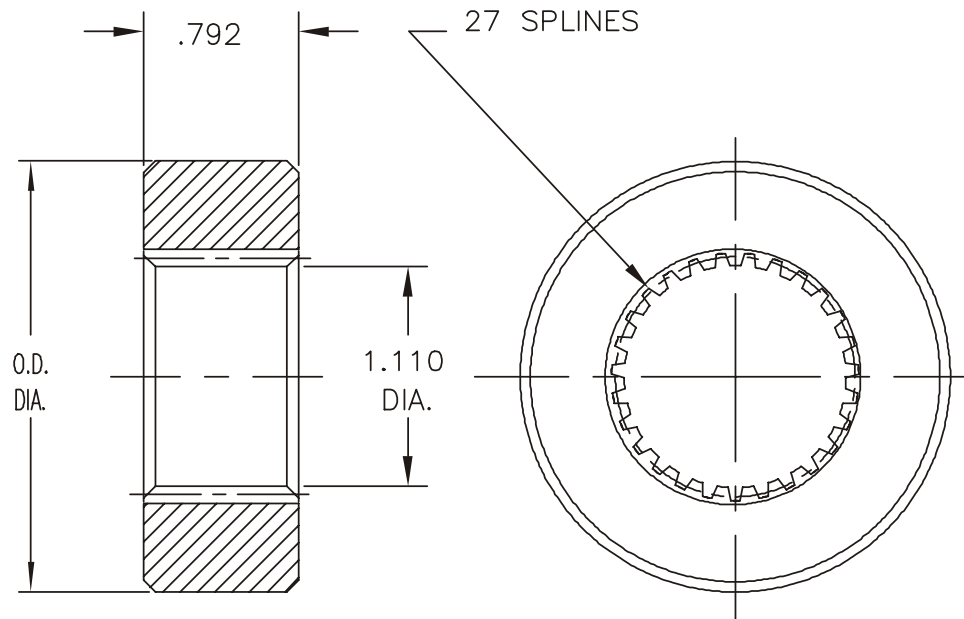
TURBINE HUB GM 254mm TO 30 SPLINES

PART NUMBER
SX-13-12
REF. 2377

DRAWING NUMBER
CD-021

"PROPRIETARY RIGHTS CLAIMED"

THIS PRINT IS SUPPLIED FOR USE IN TRANSACTING BUSINESS WITH TRI COMPONENT PRODUCTS. ALL OTHER USES CONTRARY TO THE INTEREST OF TRI COMPONENT ARE EXPRESSLY FORBIDDEN.



CX-14CB 2.190" O.D.

SX-14T 2.156" O.D.

CX-14CB

APPLICATION: CHRYSLER 904.
STATOR: OPEL OR VEGA WITH POWERGLIDE SETUP.
INSTRUCTIONS: MACHINE CAM (OUTER RACE) TO .790.

SX-14T

APPLICATION: GM 254mm NON-LOCKUP STATORS.



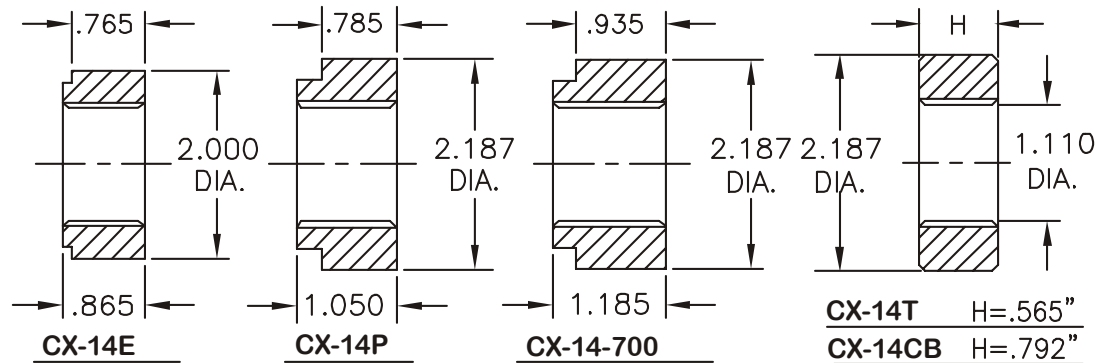
RACES

OPEL TO CHRYSLER 904 & GM 254mm

PART NUMBER
CX-14CB
SX-14T

DRAWING NUMBER
CD-022

FOR OPEL STATORS

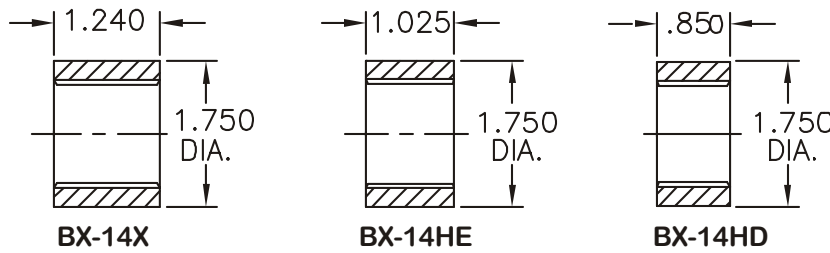


USE WITH SPECIAL
HEAVY DUTY CAM

USE WITH POWERGLIDE
OR 350 CHEVY CAMS

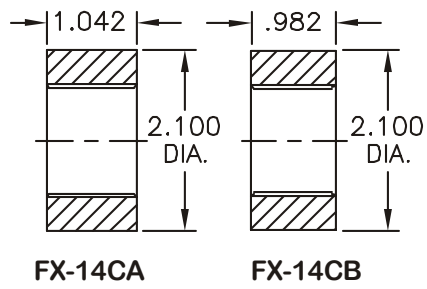
SPLINED FOR
CHRYSLER A 904

FOR OPEL STATORS

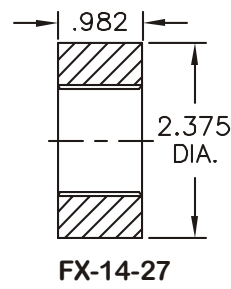


USE WITH BC-6HD SPRAG & BX-15HE OUTER RACE

FORD 10"



FORD 11"



973 Brook Avenue
Bronx, New York 10451-4208
www.tricomponent.com
1 (800) FONE-TRI
Fax (718) 402-2467

"PROPRIETARY RIGHTS CLAIMED"

THIS PRINT IS SUPPLIED FOR USE IN
TRANSACTIONING BUSINESS WITH TRI
COMPONENT PRODUCTS. ALL OTHER USES
CONTRARY TO THE INTEREST OF TRI
COMPONENT ARE EXPRESSLY FORBIDDEN.

TECH. NOTE:

BE SURE INNER RACES ARE
PROPERLY PILOTED IN END WASHERS
AND RUNNING TRUE TO OUTER RACE.

INNER RACES - 27 SPLINES.
INSIDE DIAMETER - 1.310"
(EXCEPT CX-14CB, CX-14T)

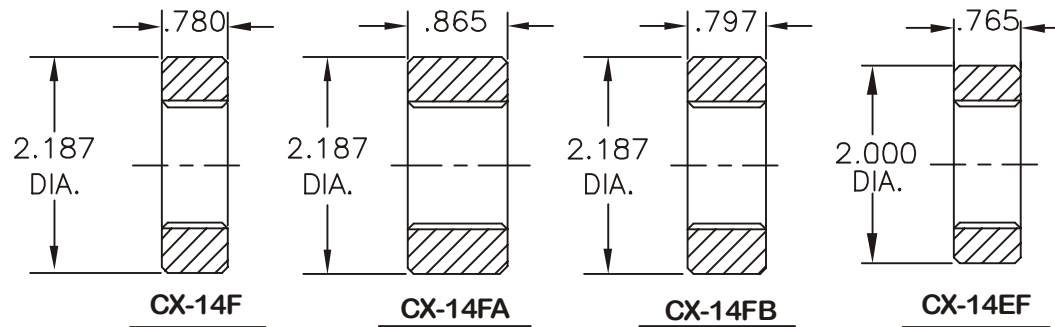


INNER RACES FOR OPEL & FORD STATORS SPLINED FOR GM & CHRYSLER

PART NUMBER
VARIOUS

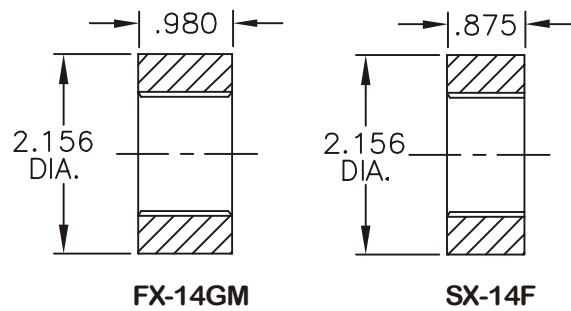
DRAWING NUMBER
CD-023

FOR OPEL STATORS

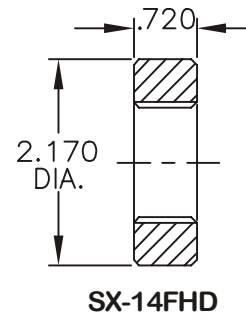


USE WITH SPECIAL
HEAVY DUTY CAM

FOR GM 350mm



FOR GM 254mm



SPECIAL O.D. TO
MINIMIZE CRACKING
OF OUTER RACE

"PROPRIETARY RIGHTS CLAIMED"

THIS PRINT IS SUPPLIED FOR USE IN
TRANSACTIONING BUSINESS WITH TRI
COMPONENT PRODUCTS. ALL OTHER USES
CONTRARY TO THE INTEREST OF TRI
COMPONENT ARE EXPRESSLY FORBIDDEN.



**32 SPLINE INNER RACES
FOR FORD C-4 & C-6
APPLICATIONS
IN GM CONVERTERS**

PART NUMBERS
VARIOUS

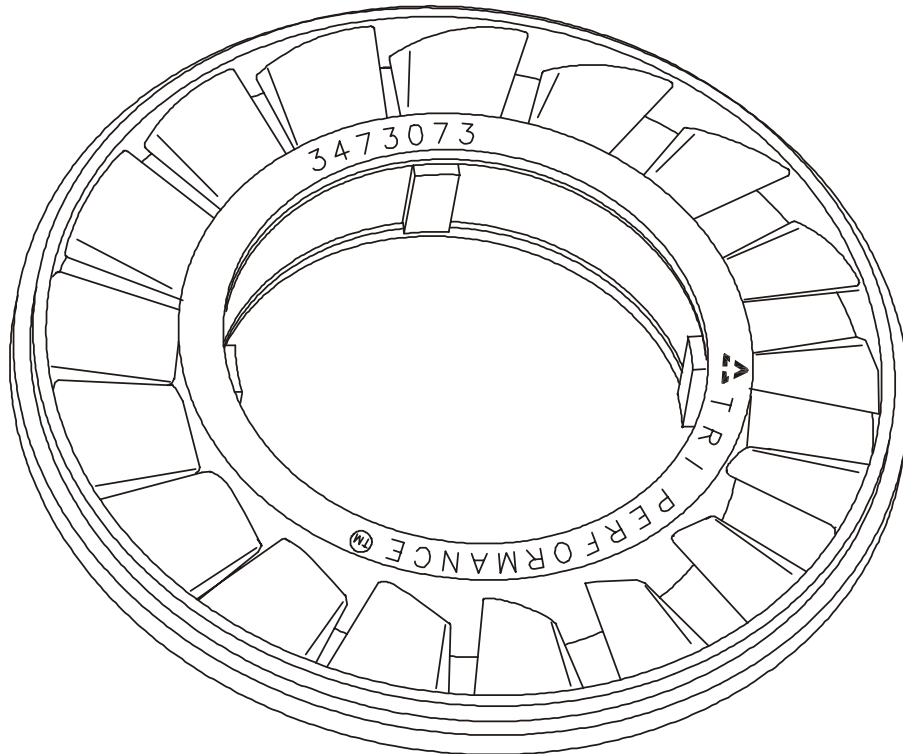
DRAWING NUMBER
CD-024



973 Brook Avenue
 Bronx, New York 10451-4209
 www.tricomponent.com
 1(800)FONE-TRI
 Fax(718)402-2467

"PROPRIETARY RIGHTS CLAIMED"

THIS PRINT IS SUPPLIED FOR USE IN
 TRANSACTING BUSINESS WITH TRI
 COMPONENT PRODUCTS. ALL OTHER USES
 CONTRARY TO THE INTEREST OF TRI
 COMPONENT ARE EXPRESSLY FORBIDDEN.



EACH RACING SEASON MORE AND
 MORE REBUILDERS INCORPORATE THE
 TRI COMPONENT OPEL STATOR INTO
 THEIR WINNERS.

IT IS AN EXACT DUPLICATE OF THE

OE 3473073

WITH THE EXCEPTION OF THE REINFORCING
 RADIUS AT THE BLADE ANCHOR POINTS.
 SPECIAL MODIFICATIONS OR UNMACHINED
 CASTINGS ARE ALSO AVAILABLE.

USE (2) VH-337 SNAP RINGS.



STATOR-OPEL

PART NUMBER
CX-5-12

DRAWING NUMBER
CD-025

"PROPRIETARY RIGHTS CLAIMED"

THIS PRINT IS SUPPLIED FOR USE IN TRANSACTING BUSINESS WITH TRI COMPONENT PRODUCTS. ALL OTHER USES CONTRARY TO THE INTEREST OF TRI COMPONENT ARE EXPRESSLY FORBIDDEN.

THIS TRI COMPONENT PROBLEM SOLVER WILL RELIEVE YOU OF THE SHORTAGE OF TH350 LOCKUP CORES. JUST RIVET INTO PLENTIFUL TH200 NON-LOCKUP TURBINES AND PRESTO YOU HAVE A UNIT TO REPLACE THAT 350 LOCKUP. OF COURSE THE LOCKUP CLUTCH IS ELIMINATED. AS USUAL, THESE PARTS ARE MADE OF TOP QUALITY SOLID STEEL FOR LONG LIFE.

DESIGNED FOR USE WITH FORD SERIES SELECTIVE WASHERS **FW-9-4 A THRU F** AND (8) **SX-12** RIVETS.

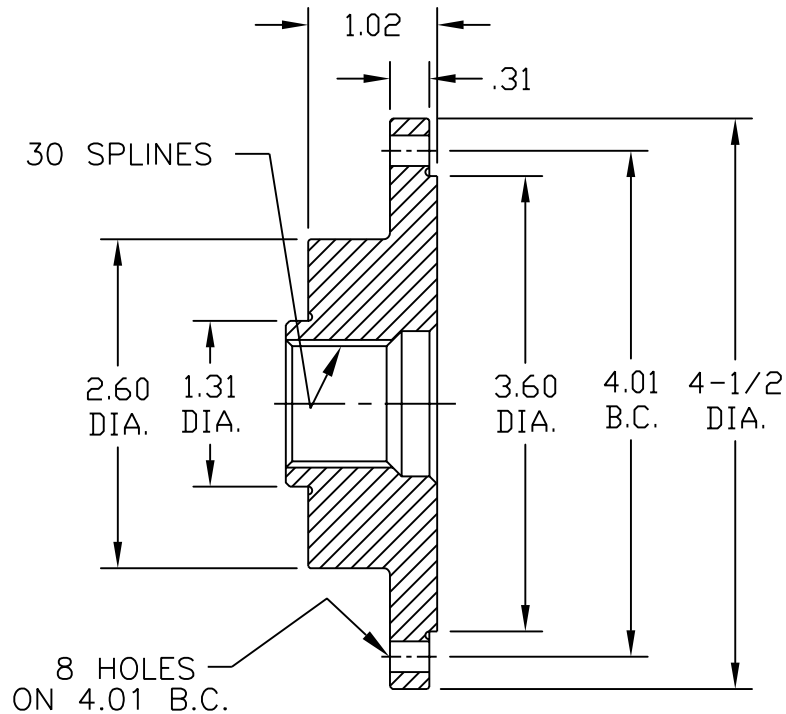


TURBINE HUB

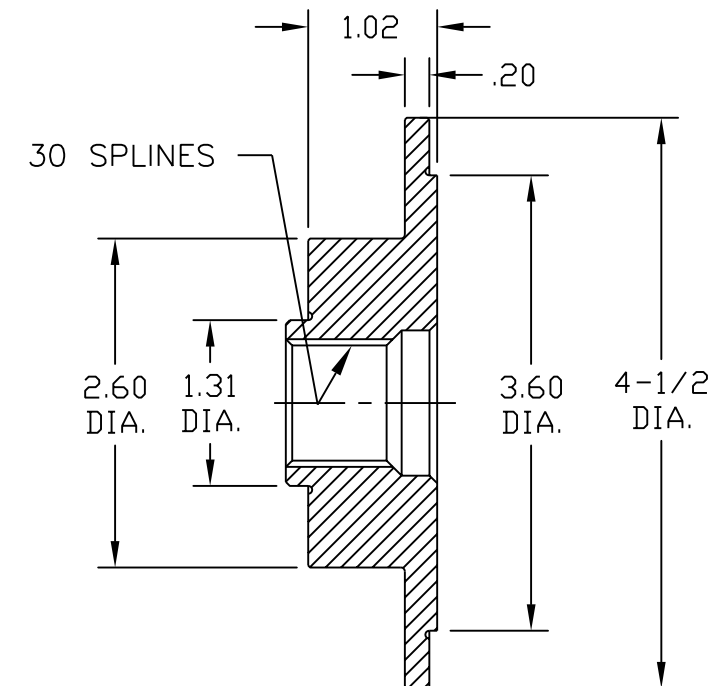
CONVERSION TH-200 TO 350 LOCKUP

PART NUMBER
SX-13-350
SX-13-350D

DRAWING NUMBER
CD-026



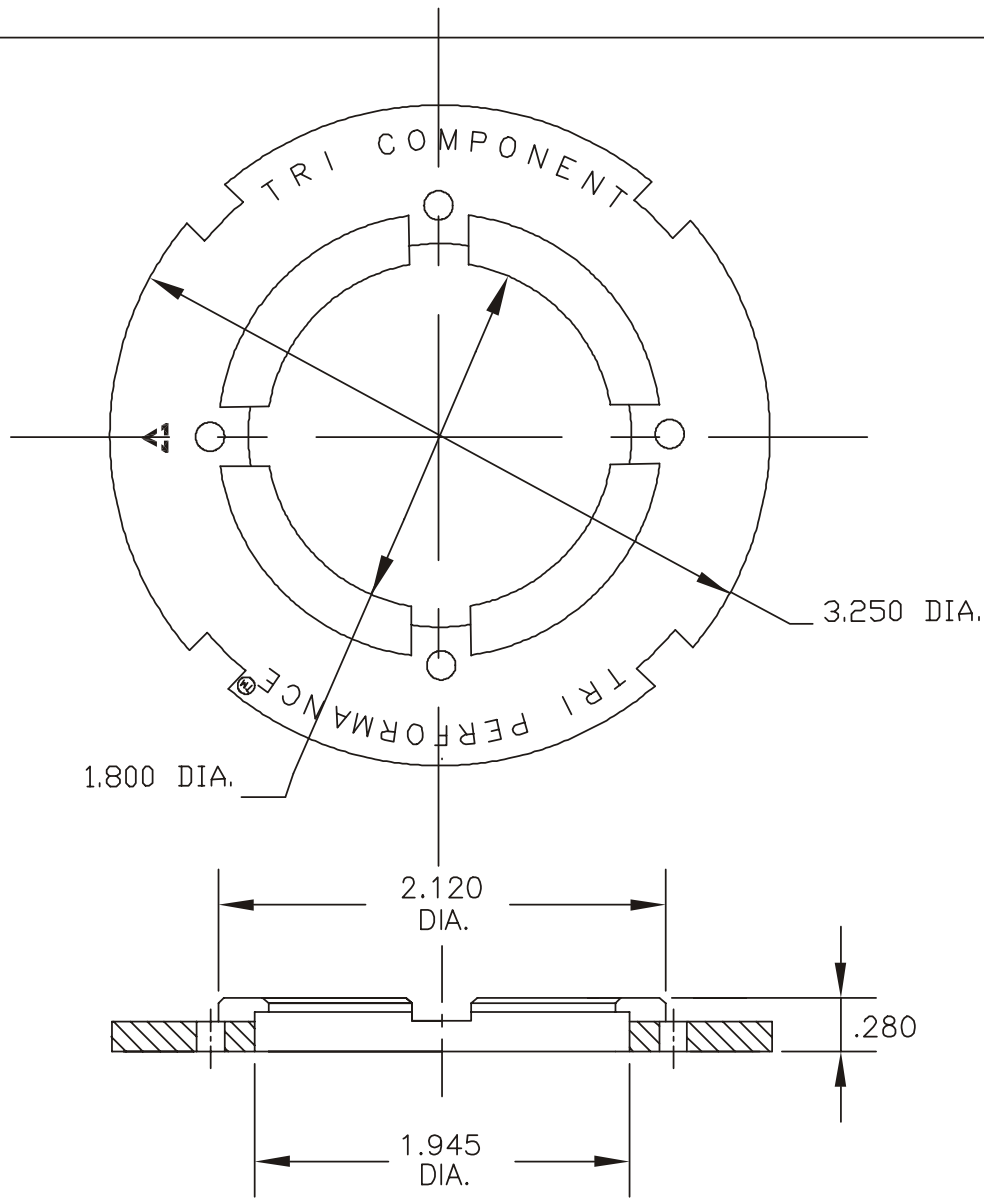
SX-13-350



SX-13-350D
W/O RIVET HOLE



973 Brook Avenue
Bronx, New York 10451-4209
www.tricomponent.com
1(800)FONE-TRI
Fax(718)402-2467



"PROPRIETARY RIGHTS CLAIMED"

THIS PRINT IS SUPPLIED FOR USE IN TRANSACTING BUSINESS WITH TRI COMPONENT PRODUCTS. ALL OTHERS USES CONTRARY TO THE INTEREST OF TRI COMPONENT ARE EXPRESSLY FORBIDDEN.

AN ALUMINUM WASHER FOR USE WITH OPEL STATORS, FUNCTIONS WITH THE "DIODE", ALSO CHRYSLER AND POWERGLIDE CAM ADAPTATIONS. NOT FOR USE WITH BC-6HD BORG-WARNER SPRAG.

COMPATIBLE WITH NTA-3446 BEARINGS AND TRA/TRB-3446 RACES. USE (2) VH-337 SNAP RINGS.



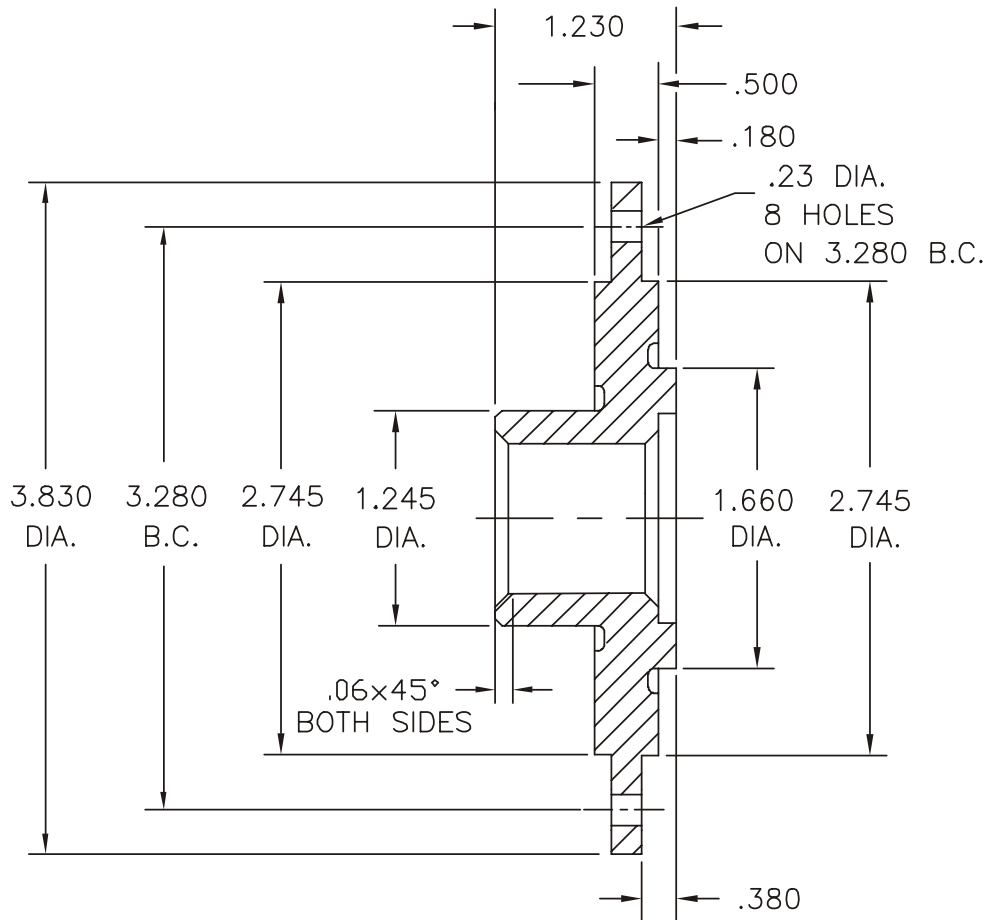
WASHER

PART NUMBER
CW-4-1HD

DRAWING NUMBER
CD-027



973 Brook Avenue
Bronx, New York 10451-4209
www.tricomponent.com
1(800)FONE-TRI
Fax(718)402-2467



HIGH PERFORMANCE TURBINE HUBS
FROM TRI COMPONENT FOR ALL APPLICATIONS.
STEELS ARE SELECTED FOR MAXIMUM DURABILITY.
AVAILABLE IN ANY SPLINE CONFIGURATION.

"PROPRIETARY RIGHTS CLAIMED"

THIS PRINT IS SUPPLIED FOR USE IN
TRANSACTIONING BUSINESS WITH
TRI COMPONENT PRODUCTS.
ALL OTHERS USES CONTRARY TO THE
INTEREST OF TRI COMPONENT ARE
EXPRESSLY FORBIDDEN.

PART NO.	SPLINES	NOTES
MX-13-3317	17	POWERGLIDE
MX-13-3319	19	CHRYSLER
MX-13-3324	24	CHRYSLER
MX-13-3326	26	FORD
MX-13-3326C	26	CHRYSLER
MX-13-3327	27	G.M.
MX-13-3329	29	FORD
MX-13-3330	30	G.M.
MX-13-3331	31	FORD



TURBINE HUBS, OPEL

PART NUMBER
MX-13-33 SERIES
REF. 2746

DRAWING NUMBER
CD-028

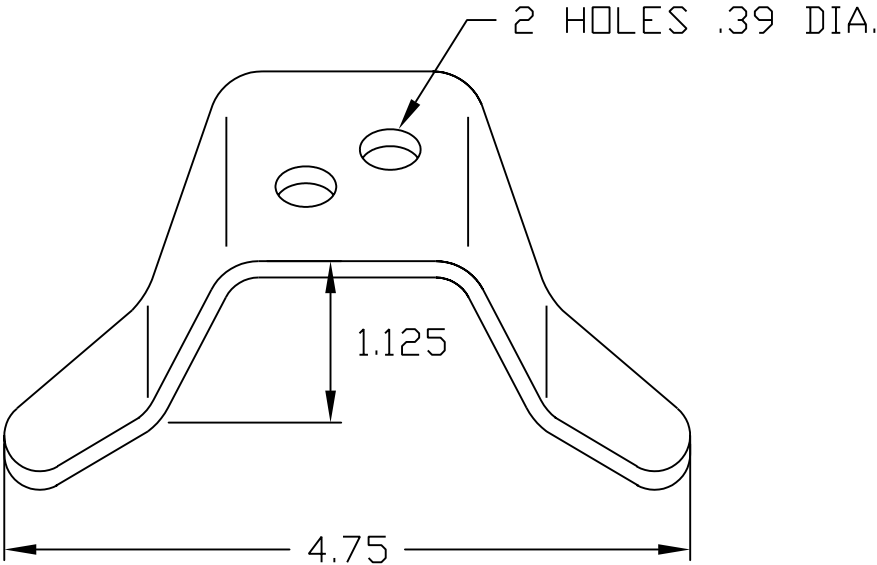


973 Brook Avenue
Bronx, New York 10451-4209
www.tricomponent.com
1(800)FONE-TRI
Fax(718)402-2467

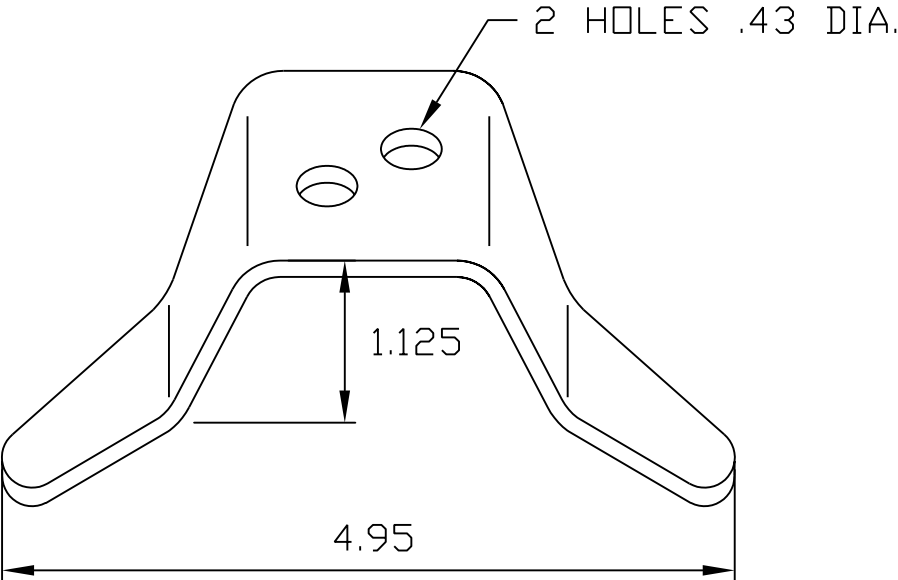
"PROPRIETARY RIGHTS CLAIMED"

THIS PRINT IS SUPPLIED FOR USE IN
TRANSACTIONING BUSINESS WITH TRI
COMPONENT PRODUCTS. ALL OTHER USES
CONTRARY TO THE INTEREST OF TRI
COMPONENT ARE EXPRESSLY FORBIDDEN.

ADAPTER BRACKET FOR 254mm(TH125)
AND 245mm CONVERTERS.
DUAL HOLE MOUNTING TO FIT ALL
G.M. FLYWHEELS. THIS PROVEN
CONVERTERS ARE GROWING IN
POPULARITY AND THESE USEFUL
BRACKETS WILL PUT YOU IN THE
WINNERS CIRCLE.
ORDER 3 PER UNIT.



SX-10-125
FOR GM 254mm



SX-10-125A
FOR GM 245mm



BRACKET, GM 254 & 245 mm

PART NUMBER
SX-10-125
SX-10-125A

DRAWING NUMBER
CD-029



973 Brook Avenue
Bronx, New York 10451-4209
www.tricomponent.com
1(800)FONE-TRI
Fax(718)402-2467

"PROPRIETARY RIGHTS CLAIMED"

THIS PRINT IS SUPPLIED FOR USE IN
TRANSACTIONING BUSINESS WITH
TRI COMPONENT PRODUCTS.
ALL OTHERS USES CONTRARY TO THE
INTEREST OF TRI COMPONENT ARE
EXPRESSLY FORBIDDEN.

AN EASY TO USE BRACKET TO
ADAPT 10" FORD CONVERTER
TO 12" FLYWHEEL. IDEAL FOR
HIGH PERFORMANCE CONVERSIONS.
IN STOCK FOR IMMEDIATE DELIVERY.

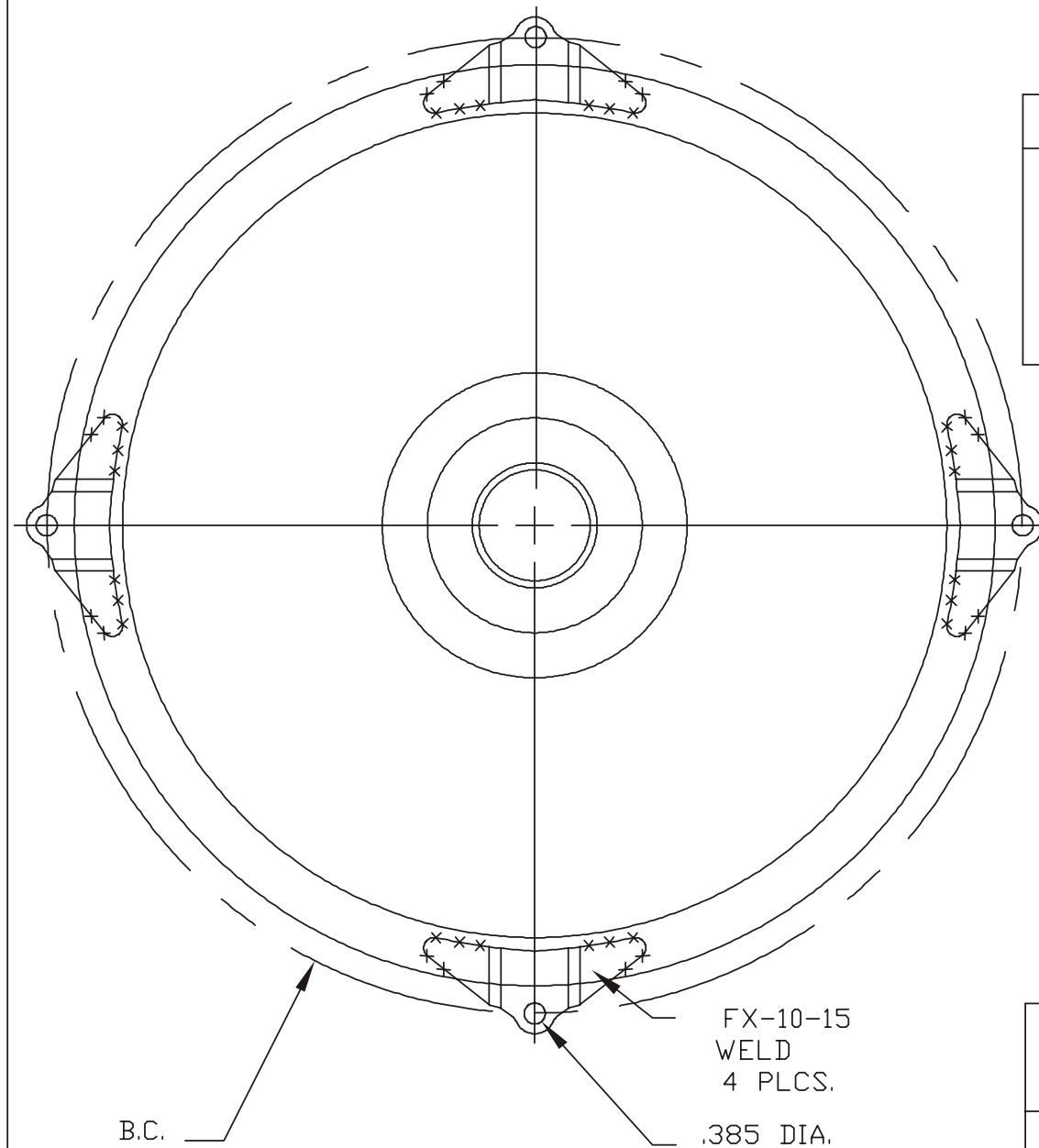
FREE SAMPLE ON REQUEST
CALL 1-800-FONE-TRI

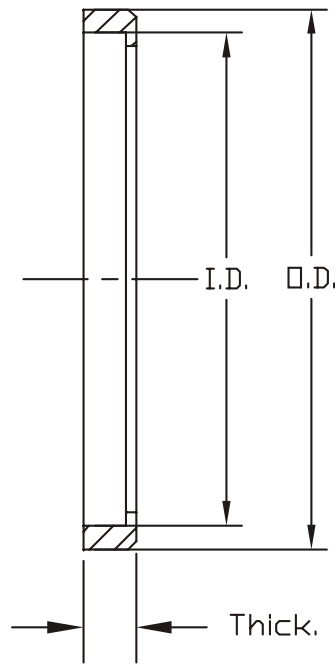
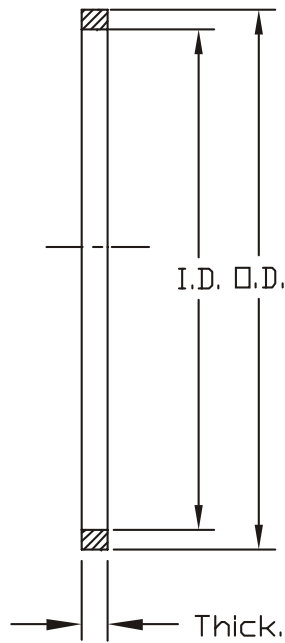


**BRACKET
10" FORD to 12" FLYWHEEL**

PART NUMBER
FX-10-15

DRAWING NUMBER
CD-030





973 Brook Avenue
Bronx, New York 10451-4208
www.tricomponent.com
1(800)FONE-TRI
Fax(718)402-2467

"PROPRIETARY RIGHTS CLAIMED"

THIS PRINT IS SUPPLIED FOR USE IN TRANSACTING BUSINESS WITH TRI COMPONENT PRODUCTS. ALL OTHERS USES CONTRARY TO THE INTEREST OF TRI COMPONENT ARE EXPRESSLY FORBIDDEN.

BEARING ADAPTERS ENABLE YOU TO INSTALL READILY AVAILABLE LOW COST BEARINGS WITH GREAT EASE. A NATURAL FOR HIGH PERFORMANCE

JUST WELD TRI COMPONENT ADAPTERS IN ANY LOCATION WHERE THE BEARING IS NEEDED. DROP IN THE BEARING – THAT'S ALL.

ADAPTER	DIMENSIONS			BEARING
	O.D.	I.D.	Thick.	
TW-2-4R	3.19	2.93	.13	TW-2-4
SW-2-11R	3.39	3.63	.14	SW-2-11
SW-2-12R	3.54	3.29	.15	SW-2-12
SW-2-18R	4.22	3.85	.13	SW-2-18

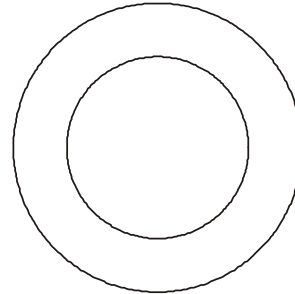
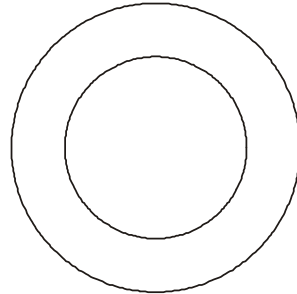
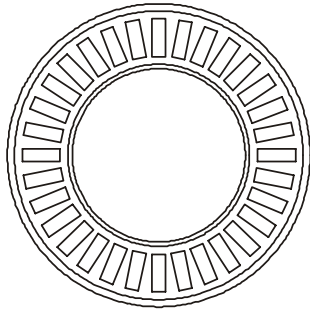
ADAPTER	DIMENSIONS			BEARING	RACE
	O.D.	I.D.	Thick.		
R-3244	3.00	2.78	.26	NTA-3244, .078 Thick.	TRA-3244, .030 Thick. TRB-3244, .060 Thick. TRB-3244, .093 Thick.
R-2840	2.75	2.51	.27	NTA-2840, .078 Thick.	TRA-2840, .030 Thick. TRB-2840, .060 Thick.



BEARING ADAPTERS

PART NUMBER
VARIOUS

DRAWING NUMBER
CD-031



973 Brook Avenue
Bronx, New York 10451-4209
www.tricomponent.com
1 (800) FONE-TRI
Fax (718) 402-2467

"PROPRIETARY RIGHTS CLAIMED"

THIS PRINT IS SUPPLIED FOR USE IN
TRANSACTIONING BUSINESS WITH
TRI COMPONENT PRODUCTS.
ALL OTHERS USES CONTRARY TO THE
INTEREST OF TRI COMPONENT ARE
EXPRESSLY FORBIDDEN.

BEARING (.078" Thick.)	RACE (.030" Thick.)	RACE (.060" Thick.)	DIMENSIONS
NTA-1828	TRA-1828	TRB-1828	1.750" x 1.125"
NTA-2031	TRA-1821	TRB-1821	1.937 x 1.250"
NTA-2233	TRA-2333	TRB-2333	2.062" x 1.375"
SW-2D (NTA-2435)	SW-2-30 (TRA-2435)	SW-2-60 (TRB-2435)	2.165" x 1.500"
FNT-4060 (JW-2ND) (.125" Thick.)	JW-2-5TT (TRA-4060)	JW-2-5T (.040" Thick.) JW-2-5 (.080" Thick.)	2.360" x 1.575"
NTA-2840	TRA-2840	TRB-2840, R-2840 Bearing Adapter Weld in	2.500" x 1.750"
NTA-3244	TRA-3244	TRB-3244, R-3244 Bearing Adapter Weld in	2.750" x 2.000"
NTA-3446	TRA-3446	TRB-3446	2.875" x 2.125"
NTA-4860	TRA-4860		3.725" x 3.000"
_____	5266 Spacer, Not Hardened	_____	4.125" x 3.250"



**BEARINGS & RACES
GENERAL PURPOSE**

PART NUMBER
**NTA, TRA, TRB
SERIES**

DRAWING NUMBER
CD-032



973 Brook Avenue
Bronx, New York 10451-4208
www.tricomponent.com
1(800)FONE-TRI
Fax(718)402-2467

"PROPRIETARY RIGHTS CLAIMED"

THIS PRINT IS SUPPLIED FOR USE IN
TRANSACTIONING BUSINESS WITH
TRI COMPONENT PRODUCTS.
ALL OTHERS USES CONTRARY TO THE
INTEREST OF TRI COMPONENT ARE
EXPRESSLY FORBIDDEN.

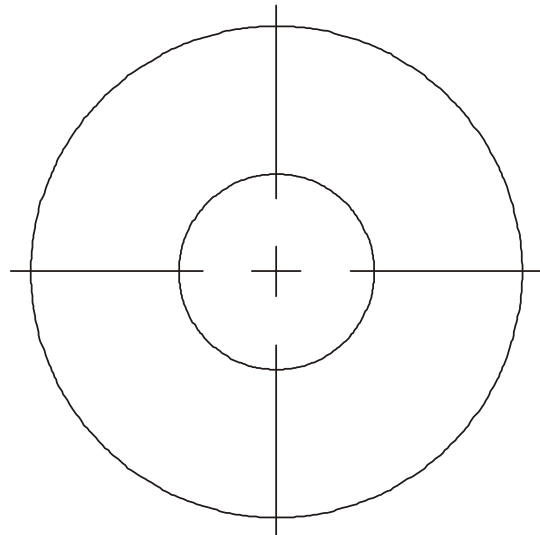
BALLOON PLATES ARE A NECESSITY
IN BUILDING HIGH PERFORMANCE
CONVERTERS. THEY ARE PLACED
AROUND THE IMPELLER HUB &
WELDED TO BOTH THE HUB
& THE IMPELLER.
TRI COMPONENT PRODUCES THESE TWO
MOST POPULAR APPLICATIONS,
BUT WILL PRODUCE ANY ADDITIONAL
APPLICATIONS YOU MAY REQUIRE.



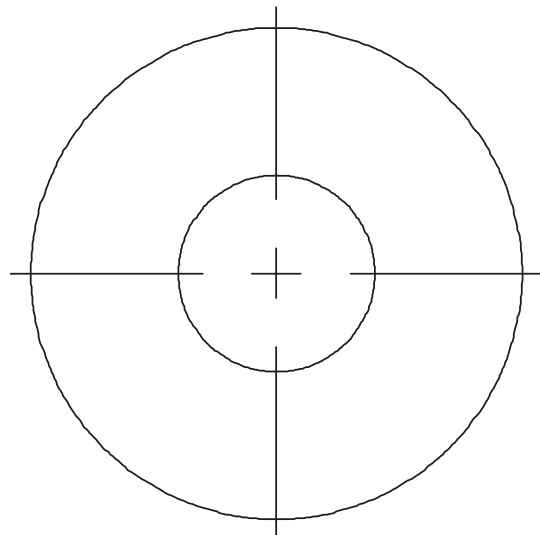
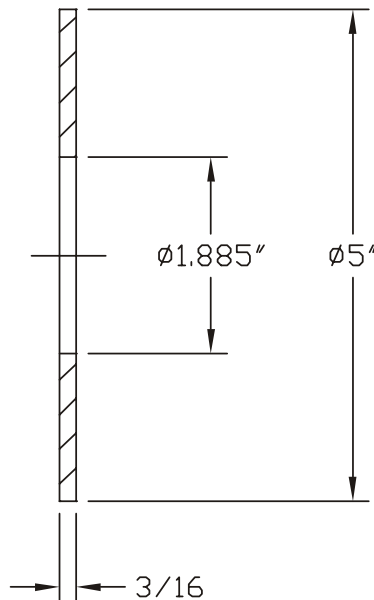
BALLOON PLATES

PART NUMBER
BP-1, BP-2

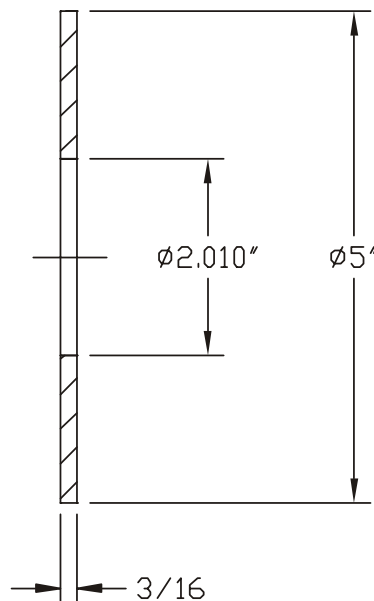
DRAWING NUMBER
CD-033



BP-1

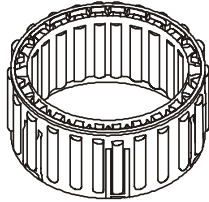
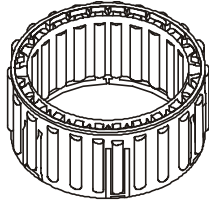
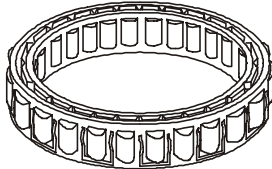


BP-2



"PROPRIETARY RIGHTS CLAIMED"

THIS PRINT IS SUPPLIED FOR USE IN
 TRANSACTING BUSINESS WITH
 TRI COMPONENT PRODUCTS.
 ALL OTHERS USES CONTRARY TO THE
 INTEREST OF TRI COMPONENT ARE
 EXPRESSLY FORBIDDEN.

PART #	CAMS	O.D. CLIPS	DRAG STRIPS	SPRAG I.D.	SPRAG O.D.	SPRAG HEIGHT	ILLUSTRATION
BC-6HD	20	10	3	1.750	2.406	.875	
BC-6HDA	20	10		1.750	2.406	.875	
34418X	34	4		3.160	3.810	.571	



SPRAGS

PART NUMBER
**BC-6HD, BC-6HDA,
 34418X**

DRAWING NUMBER
CD-034

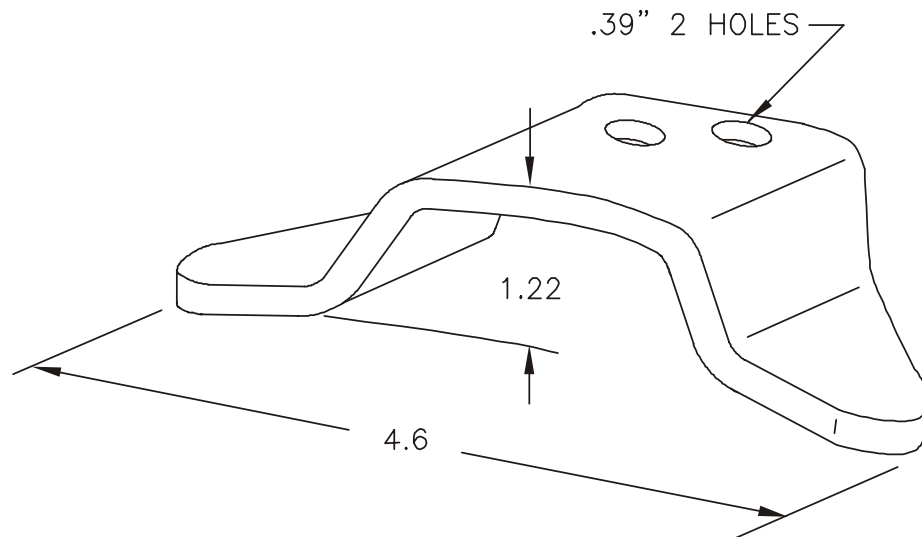


973 Brook Avenue
Bronx, New York 10451-4209
www.tricomponent.com
1(800)FONE-TRI
Fax(718)402-2467

"PROPRIETARY RIGHTS CLAIMED"

THIS PRINT IS SUPPLIED FOR USE IN
TRANSACTIONING BUSINESS WITH
TRI COMPONENT PRODUCTS.
ALL OTHERS USES CONTRARY TO THE
INTEREST OF TRI COMPONENT ARE
EXPRESSLY FORBIDDEN.

NOW AVAILABLE FROM TRI PERFORMANCE
ADAPTER BRACKET FOR FORD 11" C4
CONVERTERS. DUAL HOLE MOUNTING
TO FIT ALL G.M. FLYWHEELS.
THESE USEFUL BRACKETS WILL PUT
YOU IN THE WINNERS CIRCLE.
ORDER 3 PER UNIT.



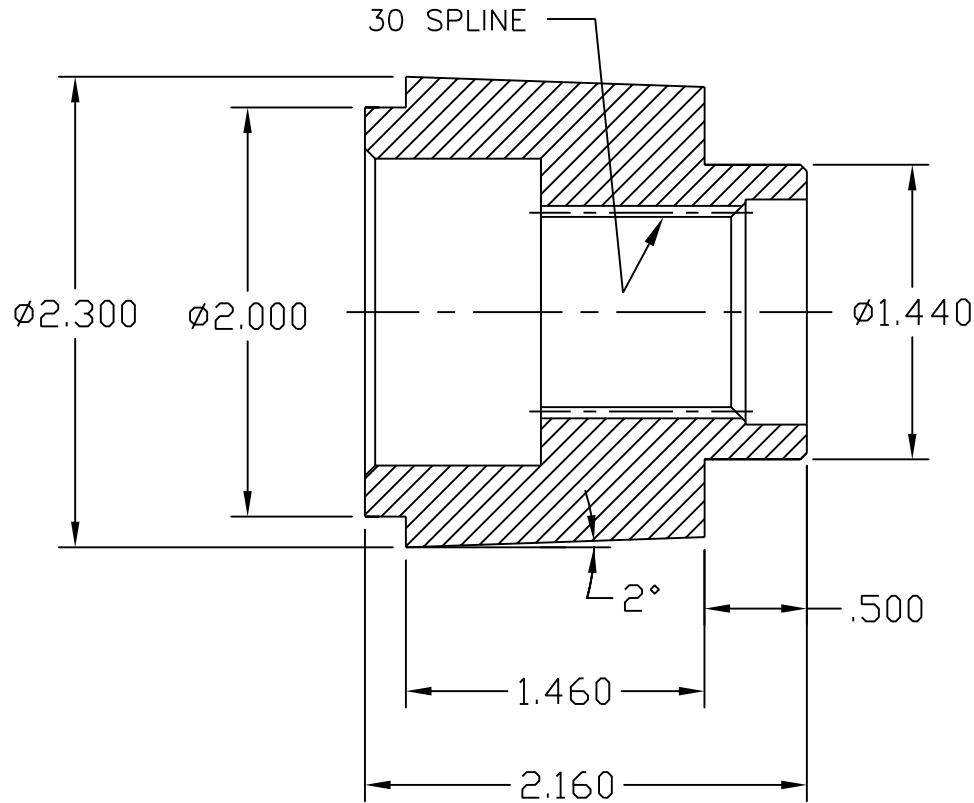
**BRACKET,
11" FORD TO GM FLYWHEEL**

PART NUMBER
FX-10-18

DRAWING NUMBER
CD-035

"PROPRIETARY RIGHTS CLAIMED"

THIS PRINT IS SUPPLIED FOR USE IN
 TRANSACTING BUSINESS WITH TRI
 COMPONENT PRODUCTS. ALL OTHER USES
 CONTRARY TO THE INTEREST OF TRI
 COMPONENT ARE EXPRESSLY FORBIDDEN.



THIS SPECIAL TURBINE HUB ALLOWS
 YOU TO ADAPT 245mm CONVERTERS
 TO TH350-400 NON-LOCKUP RACING
 CONVERTER, 30 SPLINE.



TURBINE HUB

GM 245mm TO TH350

PART NUMBER
SX-13-32

DRAWING NUMBER
CD-036



**T r i C o m p o n e n t
P r o d u c t C o r p o r a t i o n
9 7 3 B r o o k A v e .
B r o n x , N e w Y o r k
1 0 4 5 1 - 4 2 0 9**

www.tricomponent.com

sales@tricomponent.com

**8 0 0 - F O N E - T R I
8 0 0 - 3 6 6 - 3 8 7 4
7 1 8 - 4 0 2 - 2 4 0 0
F a x : 7 1 8 - 4 0 2 - 2 3 4 5**