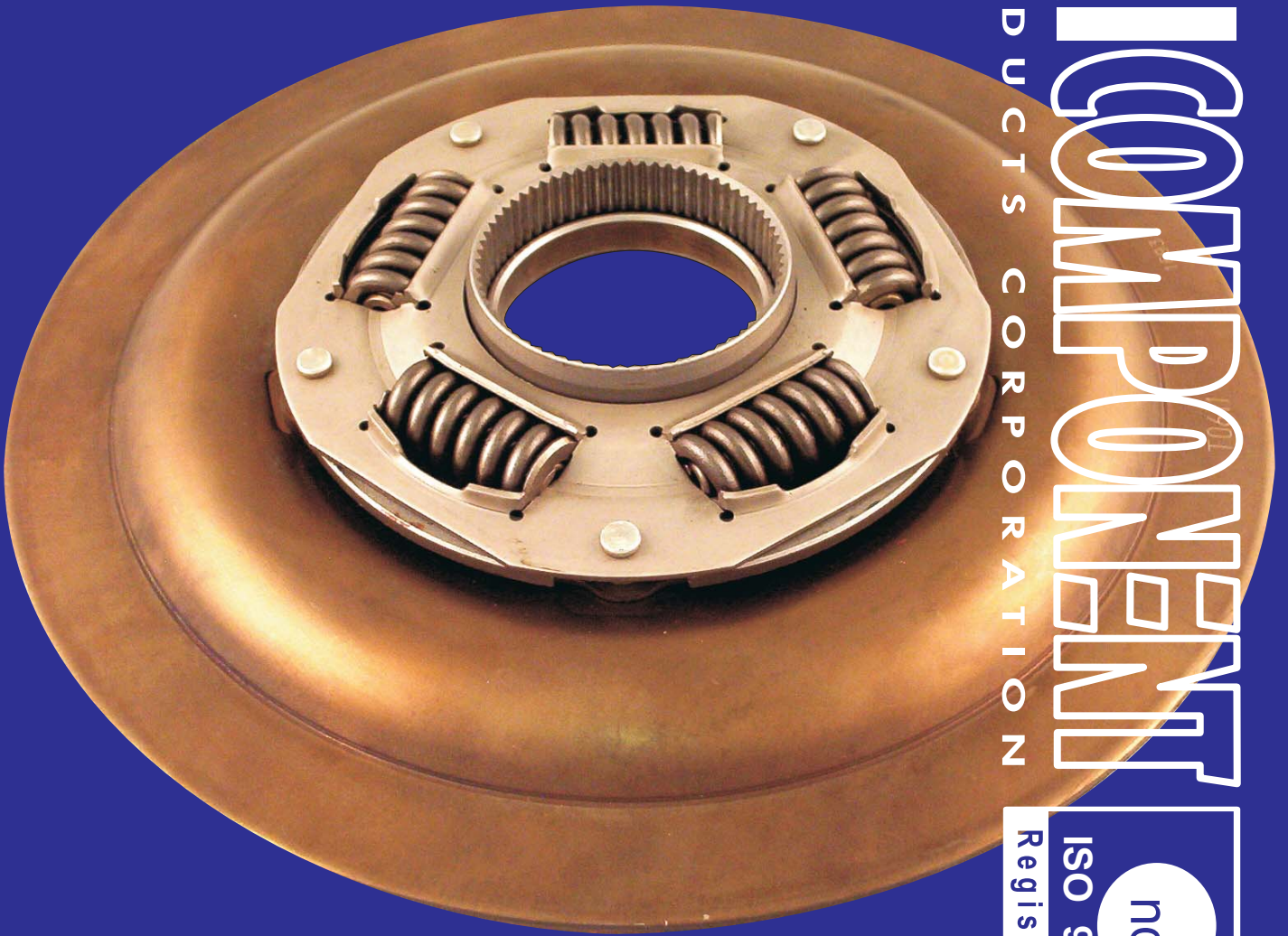


TRICOMPONENT

PRODUCTS CORPORATION



FX-23-43 LOCKUP CLUTCH ASSEMBLY

973 Brook Avenue
Bronx, New York 10451-4209
www.tricomponent.com
1(800)FONE-TRI
Fax(718)402-2151

**TRI COMPONENT PRODUCTS CORP.
973 Brook Avenue, Bronx, New York 10451-4209**

Fax:7.18 402 2151

**Phone:800 FONE TRI
800 366 3874**

Direct:718 402 2400

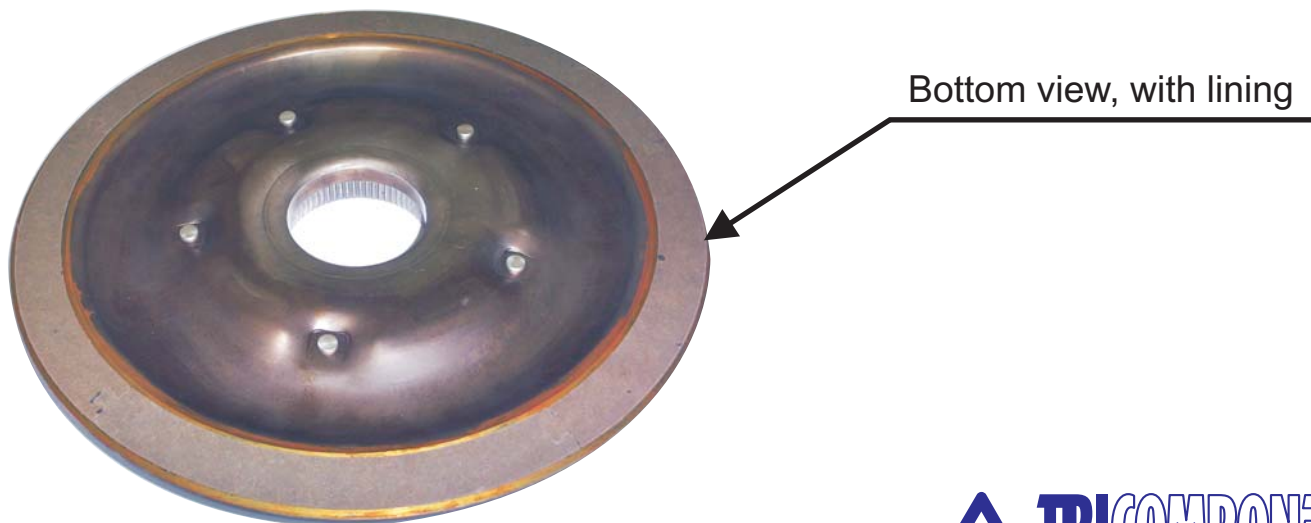
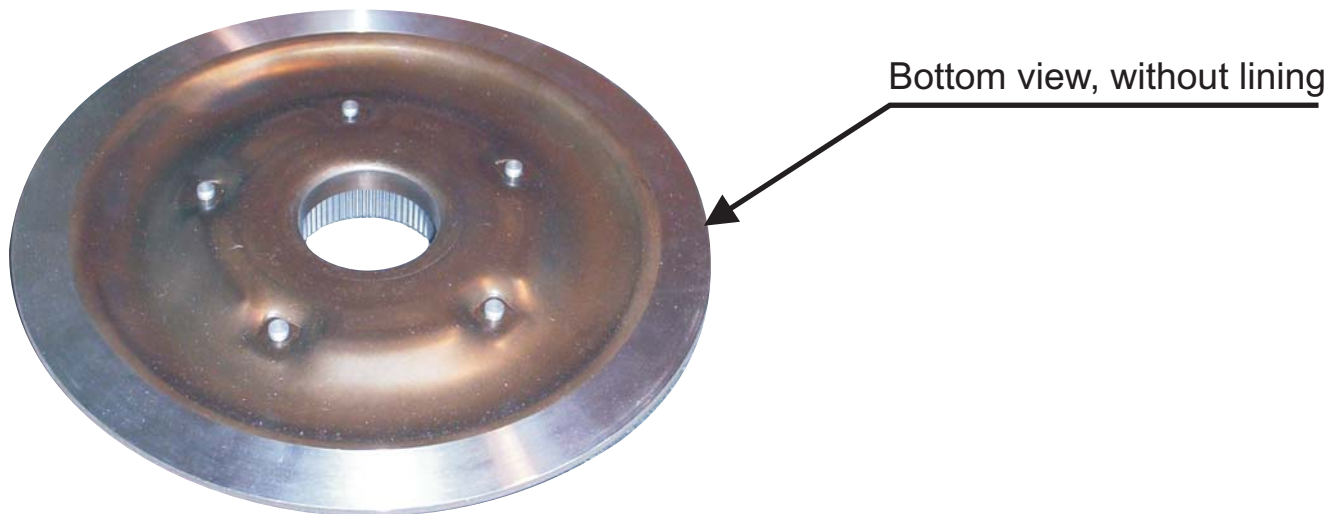
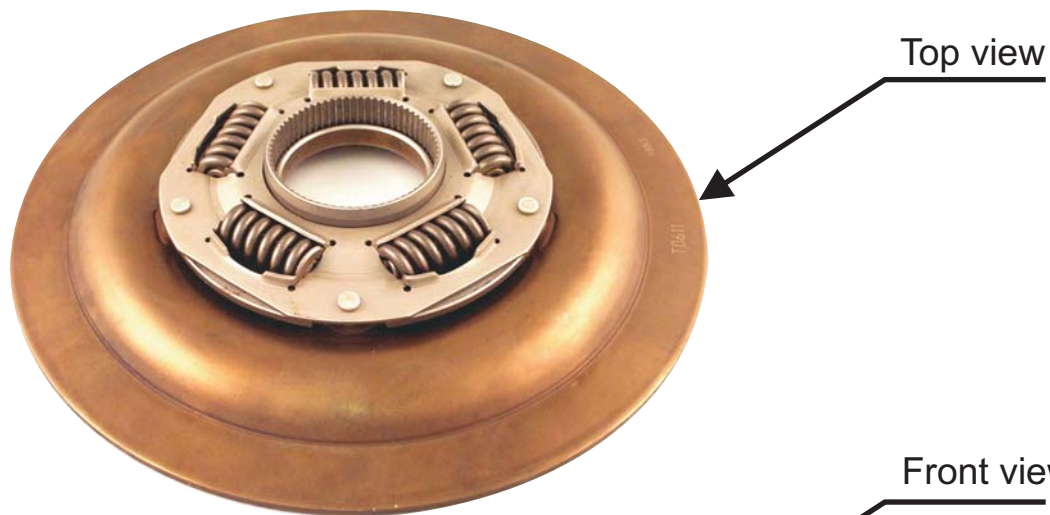
**Customer Service.....Ext.
218**

FX-23-43 LOCKUP CLUTCH ASSEMBLY

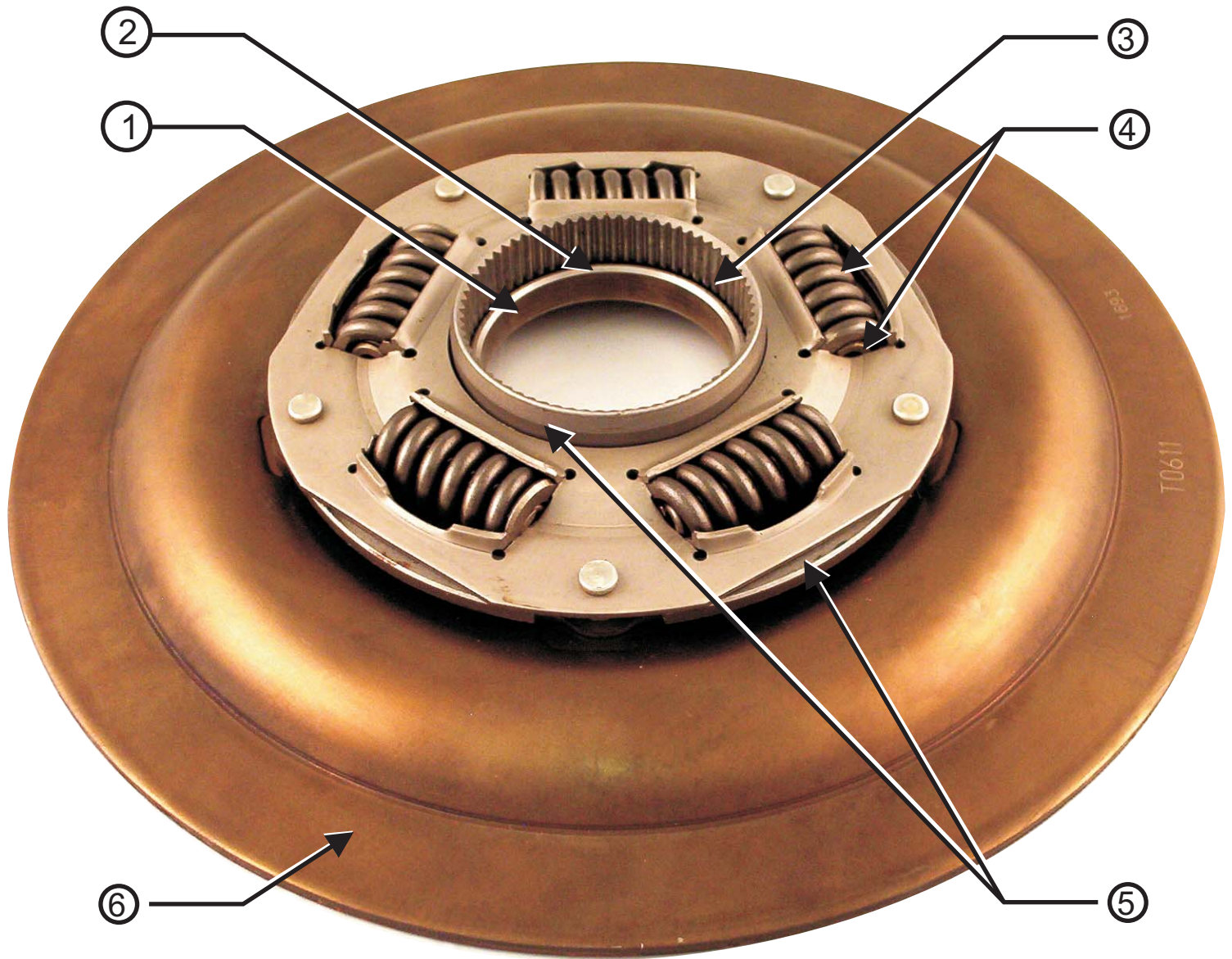
Tri Component Products Corporation is proud to offer the dual spring lockup clutch assembly FX-23-43 for the Ford E4OD converter.

Millions of miles on the road around the world. You are assured of a superior product at a competitive price.

FX-23-43 LOCKUP CLUTCH ASSEMBLY



FX-23-43 LOCKUP CLUTCH ASSEMBLY



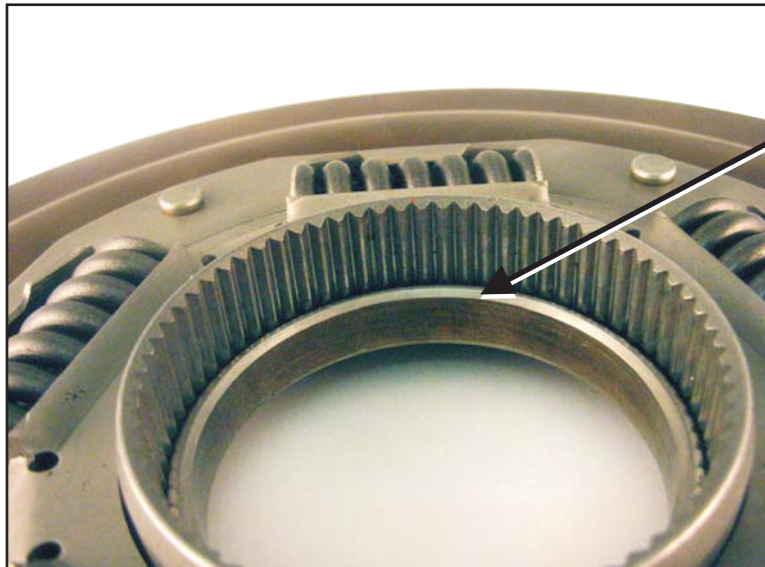
For 7 and 8 refer to page 7.

FX-23-43 LOCKUP CLUTCH ASSEMBLY



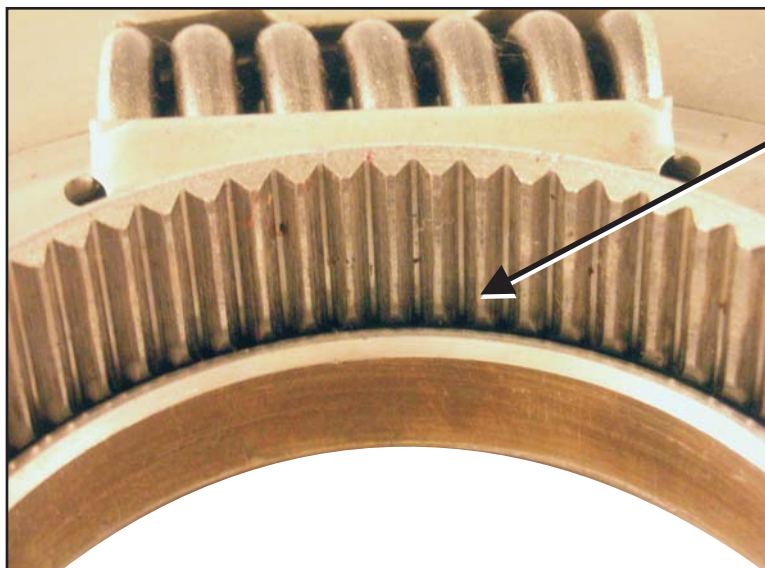
①

Seal area is roller burnished to size and polished. The resulting seal surface is work hardened and has a mirror like finish. Our "Dura-Life®" process guarantees a more stable and longer lasting life than the OE bore finish.



②

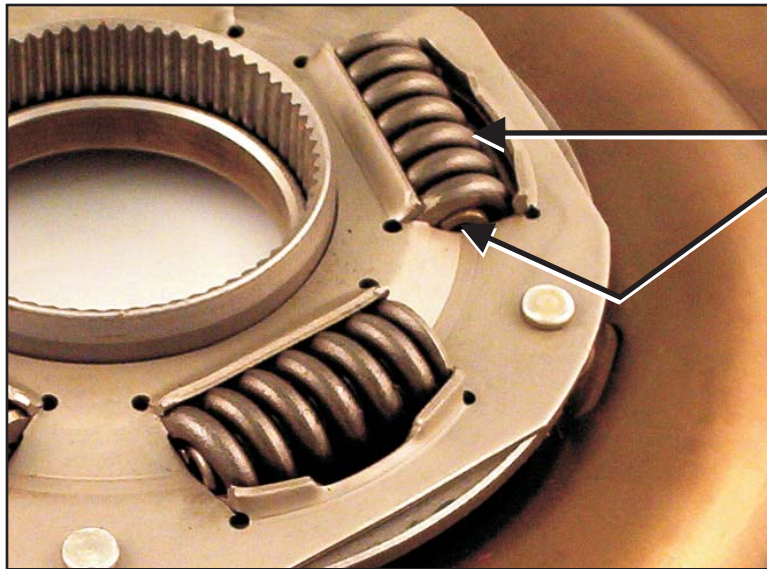
Machined surface perpendicular to centerline for exact banking of the turbine hub. This critical feature unique to our product, allows for smooth axial movement of damper on turbine hub.



③

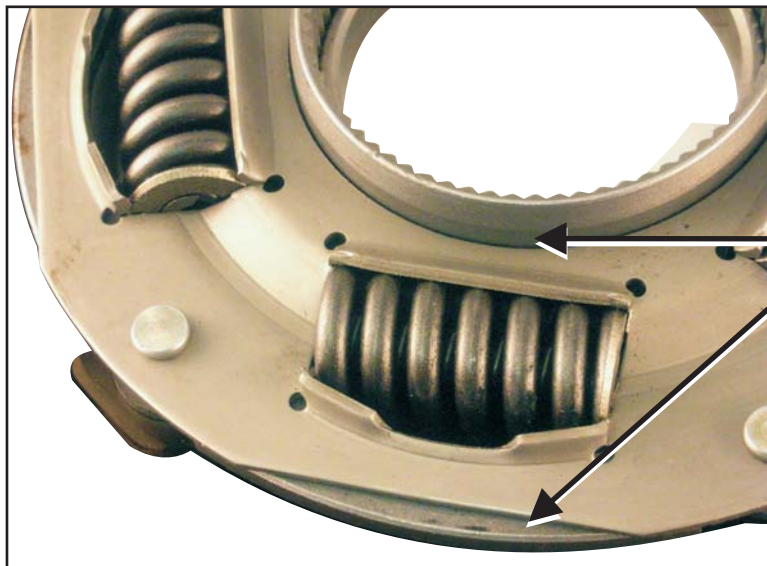
Splines are broached for a precision fit. Each and ever damper is 100% tested for fit and function.

FX-23-43 LOCKUP CLUTCH ASSEMBLY



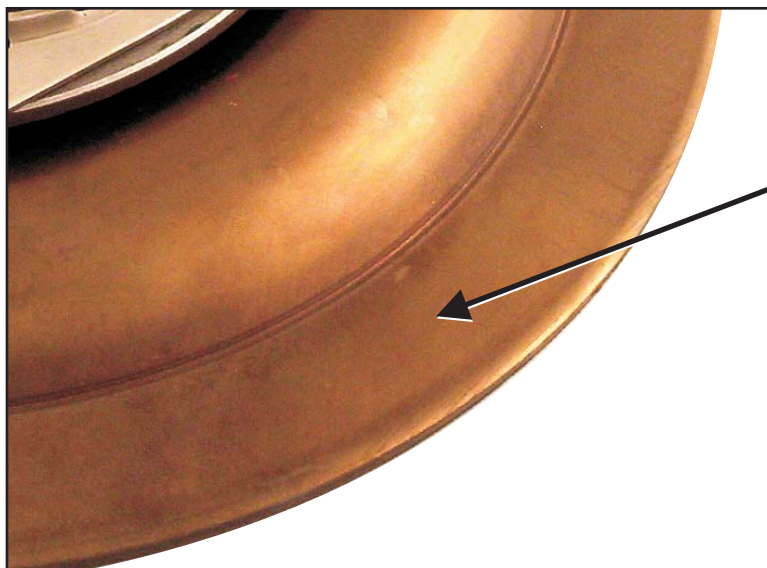
④

Damper springs manufactured from silicon chrome steel for improved spring longevity. Dual spring style prevents "bottoming out" during high load conditions.



⑤

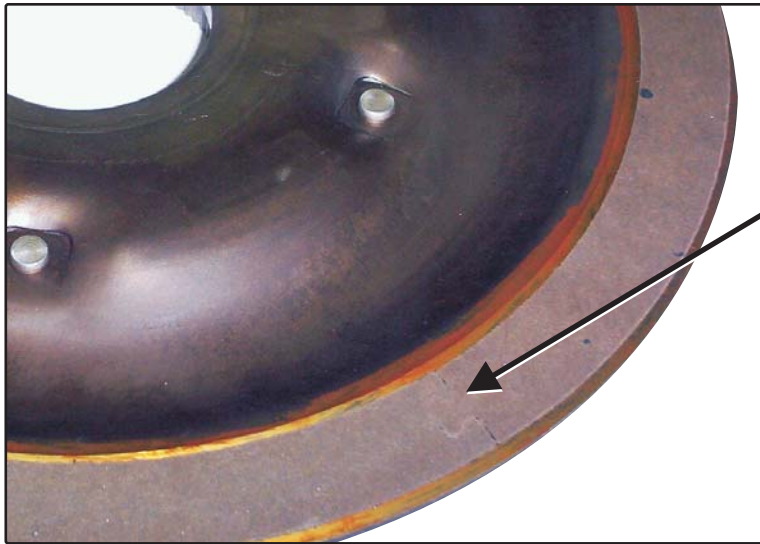
Internal hub made from heat treated hardened chrome moly alloy steel. OE hub is made from a steel casting subject to cracking.



⑥

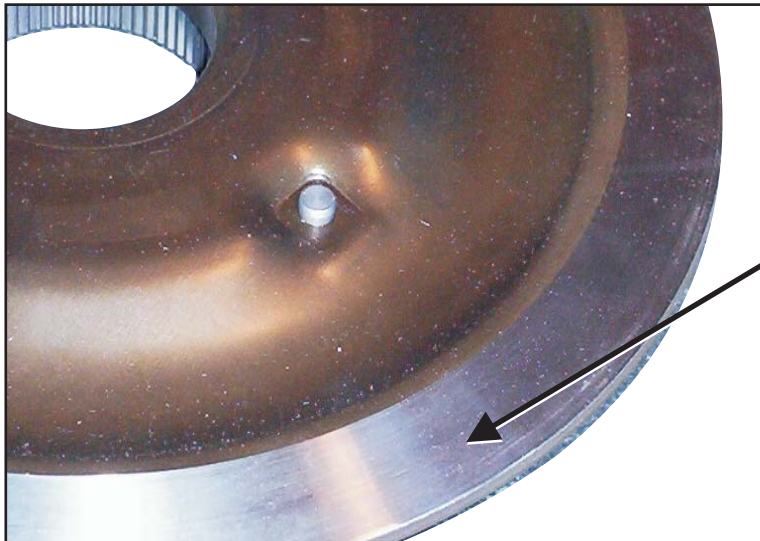
Damper plate made from high carbon spring steel. Proper flex rate is assured by our use of stress relieved spring steel.

FX-23-43 LOCKUP CLUTCH ASSEMBLY



⑦

Friction lining containing DuPont Kevlar® fiber, offers superior wear resistance above and beyond OE linings.



⑧

Bottom view without lining. Machined with 0.5 degree taper on bonding surface. As required by Ford, the taper allows the outer edge to contact cover first, resulting in a smooth engagement. Shift feel is maintained exactly as OE intended.

FX-23-43 LOCKUP CLUTCH ASSEMBLY

COMPARISON CHART

	TRI	OEM	IMPORTED
BURNISHED SEAL AREA (Illustration #1)	✓	X	X
MACHINED BANK ALIGNMENT SURFACE (Illustration #2)	✓	X	X
BROACHED INTERNAL HUB SPLINES (Illustration #3)	✓	X	X
SILICON CHROME STEEL DAMPER SPRINGS (Illustration #4)	✓	X	X
INTERNAL HUB - HARDENED CHROME MOLY ALLOY INTERNAL HUB (Illustration #5)	✓	X	X
HIGH CARBON SPRING STEEL DAMPER PLATE (Illustration #6)	✓	X	X
KEVLAR® FRICTION LINING (Illustration #7)	✓	X	X
0.5° TAPERED SPRING PLATE (Illustration #8)	✓	✓	X



Tri Component
Product Corporation
973 Brook Ave.
Bronx, New York
1 0 4 5 1 - 4 2 0 9

www.tricomponent.com

sales@tricomponent.com

800-FONE-TRI
800-366-3874
718-402-2400
Fax: 718-402-2151