

TRICOMPONENT

PRODUCTS CORPORATION

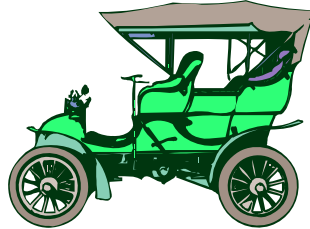


2020

ANTIQUA AUTOMATIC TRANSMISSION PARTS

973 Brook Avenue
Bronx, New York 10451-4209
www.tricomponent.com
1(800)FONE-TRI
Fax(718)402-2151

ANTIQUA AUTOMATIC TRANSMISSION PARTS



This listing includes most parts we have supplied to the antique trade. Inquiries for additional items will be considered.

Some items have been produced on a limited basis and you will be referred to the stocking distributor for such parts.

Our specialty is producing friction and steel plates for any application at a reasonable cost, even in small quantities.

Pride is taken in using the finest, most up-to-date materials to assure performance, superior to the original in many instances.

Our pledge is to help you keep those oldies but goodies rolling.

What else do you need?

Best regards,

Mike Ratner
President

We are pleased to announce our expanded capability of friction and steel plates and oil seals. Your Tri pro will gladly quote new product requirements.

Some items in this catalog are not stocked, but tooling, engineer, or sourcing may exist. Your Tri rep can provide this information. It pays to inquire

Table of Contents

Table of Contents	2
HYDRAMATIC 1948-62.....	3
CLUTCH PLATES.....	3
SEALS.....	3
BUSHINGS.....	3
HARD PARTS.....	3
JETAWAY 1956-64	4
CLUTCH PLATES.....	4
BUSHINGS.....	4
HARD PARTS.....	4
SOFT PARTS.....	4
POWERGLIDE.....	5
CLUTCH PLATES.....	5
BUSHINGS.....	5
SEALS.....	5
HARD PARTS.....	5
CONVERTER PARTS.....	5
BUICK DYNAFLOW.....	6
CLUTCH PLATES.....	6
LIP SEALS (POLYACRYLIC).....	6
MISCELLANEOUS.....	6
BUICK SPECIAL	7
SLIM JIM - MODEL 10 AND MODEL 05.....	7
CHRYSLER, IRON.....	7
CHRYSLER, ALUMINUM, A904 , A727	8
PACKARD ULTRAMATIC.....	8
CORVAIR & TEMPEST	9
BUSHINGS.....	9
CLUTCH PLATES.....	9
HARD PARTS.....	9
FORDOMATIC 2-SPEED 1959-64.....	9
FORDOMATIC CAST IRON 3-SPEED.....	9
FORDOMATIC 3-SPEED, CONTINUED.....	10
FORD BOLTED CONVERTER PARTS	
PARTIAL LIST, ADDITIONAL PARTS AVAILABLE	10
STUDEBAKER, JAGUAR, MERCEDES	
BORG WARNER D.G. (3 BAND) 1950-66.....	11
MISCELLANEOUS BORG WARNER	11
CHRYSLER FLUID DRIVE.....	12

HYDRAMATIC 1948-62

CLUTCH PLATES

	<u>OE#</u>	<u>TRI#</u>
Friction, waved, 2 pc. lining	8609115	7117
Friction, flat, truck	(8615592)86186867	(7820)7820A
Steel, front & rear	8603954	7116

SEALS

Seal, rear, 1955 Olds	8617123	8617123
Dust shield, 1955 -56 Olds (7329)	8617124	8617124
Seal, lip, manual, inside lip (3314L)	8609597	8609597
O-ring, T.V., lever .300 x .093 (7615V)	8615481	8615481
Seal, lip, polyacrylic, inner, F&R	8619300	8619300
Seal, Lip, polyacrylic, outer	8619301	8619301
Seal, lip, polyacrylic, inner, rev.	8611949	8611949
Seal, rear, metal clad 1939-50	1314707	Use (2) 38-55-7SC
Seal, lip, outer, polyacrylic reverse	8611992	8611992
Seal, lip, outer (1952 – 54 Pont.) (3638L)	8619315	8619315
Seal, lip, outer expander type (3157L)	8613957	Use 8619315
Seal, Front pump, metal clad, silicone	8618697	7103

BUSHINGS

Bushing, oil delivery sleeve	8618162	7006
Bushing, reverse center gear	8618136	RB-18

HARD PARTS

Oil delivery sleeve	8611654	7124
Band 1954-56, front	8615039	7616A

JETAWAY 1956-64

CLUTCH PLATES

	<u>OE#</u>	<u>TRI#</u>
Neutral friction	8618366	4217B
Neutral steel	8616475	4218
Rear friction	8618835	4264A
Rear steel	8620691	4265
Overrun friction	8618704	4302A

BUSHINGS

Reverse sun gear	8618136	RB-18
Extension housing, cadillac	8617449	4014

HARD PARTS

Filter (4740C)	8619214	8619214
Band	8616092	4422
Sprag, front	8618363	4308
Sprag, rear (8616213)	8618372	4212
Reverse cone, plastic, 1959/64 6.870 O.D.	8618736	4510B
Reverse cone, plastic 1956/58 6.500 O.D.	8616605, 8618568	4510A
Coupling cover, aluminum	8619972	4182
Vane ring, oversize		4321X
Spring, detent	8619104	8619104
Spring, reverse wave	8619278	4500B
Bushing, Extension Housing 1959/64 Cadillac	8617449	4014

SOFT PARTS

O-ring, T.V., lever .300 x .093	8609597	8609597
Seal, square cut, cooler fitting	8616494	8616494
Seal, manual lever, inside lip (3314L)	8615481	8615481
Lip seal, rev. outer, polyacrylic (3287L)	8617369	8617369
Lip seal, rev. inner, polyacrylic (3531L)	8618743	8618743
Lip seal, neutral inner, polyacrylic (3282L)	8617391	8617391
Lip seal, neutral outer, polyacrylic (3281L)	8617364	8617364

POWERGLIDE IRON & ALUMINUM CASE

CLUTCH PLATES

	<u>OE#</u>	<u>TRI#</u>
Friction plate, lug type 50-55	3713694	8305
Friction, plate, reverse	1379373	18506
Friction plate 56-60	3748703	8305A
Friction plate 61-62	3779905	18305A
Friction plate 59-61	3789297	18305C
Steel, 6 lug, flat (18306A)	3779903	3779903

BUSHINGS

Primary pump cover	3790478	CB-18
Front pump	8623940	8005
Extension housing	6260048	8008
Output shaft pilot	3789034	8004
Sun gear, bronze, 19 splines	3755411	8436

SEALS

Lip seal, piston inner(3103L,3812833)	3689713	3689713
Seal, square, pressure regulator	3713642	3713642
Seal, selector, lip, all rubber, iron P.G.(3528)	3689866	3689866
Converter cover 30535L	FO-1-21	3814565

HARD PARTS

Bearing assembly, low sungear (alum. Case)	3731878	28321
Diaphragm assembly, modulator	3709049	8510
Pump gear kit 1953-62		MG-100K
Modulator, alum P.G. 1962-63	3812741	28738
1963-70	3905487	28738B

CONVERTER PARTS

Bushing, cover	3790478	CB-18
Washer, aluminum	3709094	CW-4
Washer, steel, 3 lugs	3702744	CW-2-1
Washer, fibre	3719262	CW-9
Roller, stator	3741037	CR-7
Spring, accordion	3874301	CS-6

POWERGLIDE

CONVERTER PARTS (continued)

Seal, cover, lathe cut	3814565	FO-1-21
Inner race, splined	3702102	CX-14
Turbine hub (use WX-12A rivets)	3702724	CX-13

BUICK DYNAFLOW

CLUTCH PLATES

	<u>OE#</u>	<u>TRI#</u>
Friction plate (6)	1396099	5313H
Steel plate (6)	1335192	5312

LIP SEALS (POLYACRYLIC)

Reverse servo 48-56 (Also fits cast iron Chrysler & Ultramatic)	1333544	1333544
Low servo 56-63	1192596	1199949
Clutch piston, outer 48-58	1333099	1333099
Clutch piston, outer 59-63	1188614	1188614
Clutch drum, inner 59-63	1188735	1188735
Low servo 48-55	1333536	1333536
Reverse servo 59-63	1182483	1192597

MISCELLANEOUS

Bushing, pump body	1191197	65005
Washer, converter sun gear	1165990	SW-3
Sprag, converter, rebuilt only	1195037	RC-6
Torque ball retainer	1191652	5646C
Rivet, converter hub, 1948-56		5177R
Seal, lathe cut, converter	1192094	FO-1-21
Sprag, cams only, bags of 100		S-407
Kit, Spring & Rollers	1391959	1391959

BUICK SPECIAL

Clutch spring, belleville	1194465	1194465
Kit, converter spring & roller	1388996	1388996

SLIM JIM - MODEL 10 AND MODEL 05

	<u>OE#</u>	<u>TRI#</u>
Friction plate, front	8622291	24250H
Steel plate, front	8619628	24251
Friction plate, neutral	8619674	24630
Steel plate, neutral	8619675	24631
Band overrun	8619705	24415
Lip seal, reverse outer	8619654	Use 8617369
Damper assembly, flywheel, Model 10	8621966	8621966
Damper assembly, flywheel, Model 05	8622206	8622206
Filter assembly, Model 05	8621218	14522
Kit, Model 10, overhaul		K24900-1
Filter Assembly, Model 10	8619835	24800

CHRYSLER, IRON

Seal, pump, metal clad	1738263	20-116
Seal, lip, servo	1329638	1333544
Sleeve, pump drive	1738246	2572B
Ring gear, converter, 146 teeth	1138903	RG-146
Ring gear, converter, 172 teeth	1673646	RG-172
Friction plate, rear, .097" thick	1732116	2854
	1391959	1391959

CHRYSLER, ALUMINUM, A904 , A727

Detent Lever Early, Long Stop (Rooster Comb)	2801783	K22229A
Detent Lever Early, Long Stop (Rooster Comb)	3410484, 4531159	K22228B
Flexplate, Universal fits all 6&8 Cyl.		12970X
Part Number Replaced:	4058428	
	2204719	
	1949637	
	2400885	
	4058429	
	2204768	
	2464231	
	2204767	

PACKARD ULTRAMATIC

Converter sprag	450218	450218
Gasket, pump shaft	450660	450660
Gasket, converter	421599	421599
O-ring, converter cover	421752	421752
Clutch plate, friction	1548882	7117
Clutch plate, steel	6470245	6470245
Band, R&R only	1550432	1550432
Converter drive plate, R&R only	450678	450678
Seal, lip, servo, inner	421849	1333544

CORVAIR & TEMPEST

BUSHINGS

	<u>OE#</u>	<u>TRI#</u>
Converter Hub (18001)	6266225	CB-18-1
Turbine Shaft (2)	6255740	18002
Low Sun Gear	6255742	18003
Clutch Drum	6257965	18004
Front Pump	6256246	18005
Rear Pump	6256292	18006
Pinion Shaft	6256075	18007
Converter Hub, 63 Tempest	9772551	CB-18-2
Steering Box, Pinion Shaft	5674018	C703
Steering Box	_____	C703A
Steering Box, Cover	_____	C1640B

CLUTCH PLATES

Steel, 6 External Teeth	5779903	18306A
-------------------------	---------	--------

HARD PARTS

Pump Drive Plate	6255683	18205
------------------	---------	-------

FORDOMATIC 2-SPEED 1959-64

Front pump bushing	COAP-7B258A	26001
Pump bushing, oversize O.D.	N. L.	MFB-1
Extension housing bushing	B5AZ-7A034A	6023
Flex plate, converter	CIDZ-6375A	FX-600
Rear drum	6150044	16340

FORDOMATIC CAST IRON 3-SPEED

	<u>OE#</u>	<u>TRI#</u>
Friction plate, front, paper (.060)	C9AZ-7B164A	6204G
Friction plate, rear (.079)	C8AZ-7B164G	6221G
Steel plate, front & rear (.068)	C8AZ-7B442A	6205

FORDOMATIC 3-SPEED, CONTINUED

Bushing, pump body	C8AZ-7B258A	6010
Bushing, pump gear	C1AZ-7B259A	6011
Bushing, stator support .938 I.D.	B5AZ-7B261A	6017
Bushing, stator support .907 I.D.	B1AZ-7B261A	6009
Bushing, extension housing	B5AZ-7A034A	6023
Sleeve, stator support repair		MFB-2
Sprag, Lincoln	B9MP-7940A	6107E
Sprag, 24 cams 1956-67	B9AZ - 7A089A	6239C
Sprag, 36 cams 1956-67	2913230	6239E
Sprag, 30 cams 1956-67	B9AZ - 7A089B	6239D
Roller Clutch 1963-81	C3AZ - 7A089A	6239G
Front pump assembly, for 17 spline shaft	B1AZ-7A103A	6551A
Front pump assembly, for 29 spline shaft	C3AZ-7A103A	6551D
Diaphragm spring for front clutch	C0AP-7B070A	6208C
Washer fiber front clutch hub	PMB-77577B	6203A

FORD BOLTED CONVERTER PARTS **PARTIAL LIST, ADDITIONAL PARTS AVAILABLE**

Converter hub 1952 -64 bolted (flat back)	C2AZ-7915B	FH-1-7
Converter hub, bolted (replaces recessed back)	B5A-7915A	FH-1-7K
Universal impeller hub kit with update washers and instructions.		
O-Ring, small, hub	1P-7916A	FO-1-20
O-Ring Large Cover	B3A-7963A, B6A-7963A	FO-1-21
Gasket, Cover, 34 Holes	1P-7963C	FO-1-22
Washer, turbine, fiber	1P-7962A	FW-9
Washer, aluminum, stator	PAN-7937C	FW-4
Washer, bronze, 2 lugs	PAN-7937C	FW-3
Washer, steel, hub	B6AZ-7A812A	FW-2
Nut, cover	357919-S	FX-10-6
Race, inner	1P-7946A	FX-14
Race, outer	1P-7947B	FX-15
Sprag, 20 cam	B9MP-7940A	FC-6-1
Sprag, 14 cam	B9AP-7940A	FC-6
Ring gear 146 teeth	1P-6384A, B9A-6375A	RG-146S
Ring gear 148 teeth	PMB-6384A, B8A-6375D	RG-148S

STUDEBAKER, JAGUAR, MERCEDES
BORG WARNER D.G. (3 BAND) 1950-66

	<u>OE#</u>	<u>TRI#</u>
Master Overhaul kit, complete		DK900
Master Overhaul kit with frictions, no steels		DK900-S
Overhaul Kit, no clutches		K9900-4
Friction plate, paper lined	537702	9113
Friction plate, bronze, use 9113	537702	9113B
Steel plate	529644	9114
Bushing, pump body, standard passenger	529581	9008
Sprag, reverse 610 narrow	(529545) 537053	9142
Sprag, forward, .790 wide	(529657) 537050	9138
Band, low & forward, Flex	529714	9165
Band reverse	529719	9166
Pump body & gears (industrial, fits passenger)		6AT1160
Pump gear kit, machining required to match		MG-BWK
Front pump seal	1567527	20-116
Torque converter, rebuilt Jaguar		Inquire
Torque converter, rebuilt Mercedes		Inquire
Torque converter lip seal Kit		WO-23-20K

All internal torque converter components are stocked.

MISCELLANEOUS BORG WARNER

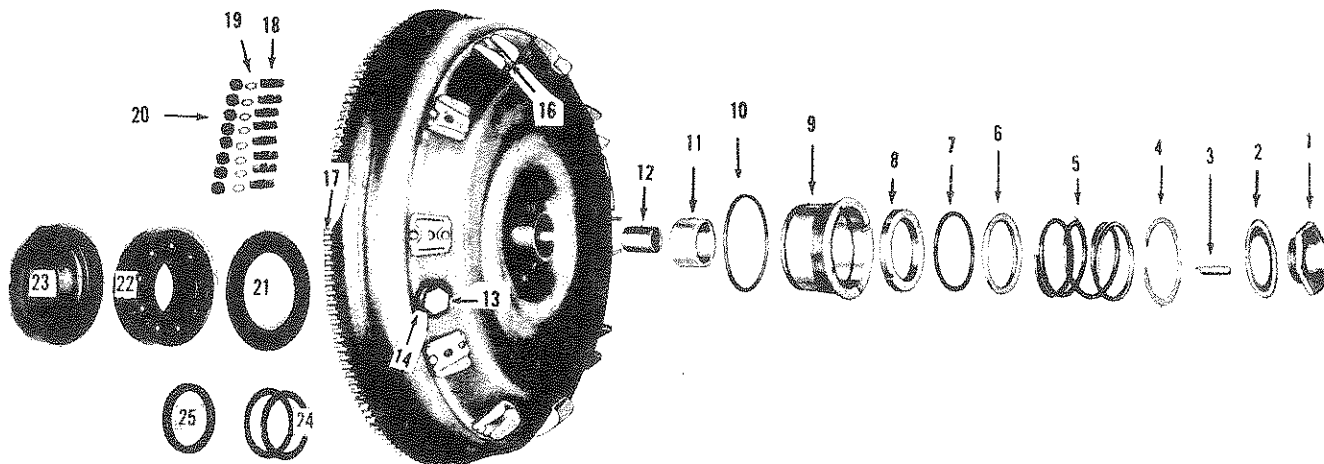
Flex plate, Rambler, 19716	3191958	WX-600
Flex plate, Studebaker	1539081	WX-601
Reinforcement ring for WX-601	527801	WX-601P
Ring gear, converter, Studebaker, 162 teeth (F-15343)	1539744	RG-162
Ring gear, converter Studebaker, 151 teeth	1539747	RG-151
Ring gear, converter, Jaguar 133 teeth (F-10645)	911560	RG-133
Ring gear, converter, Studebaker 1950-55 Commander	525272	RG-133F

CHRYSLER FLUID DRIVE

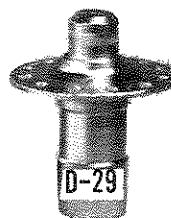
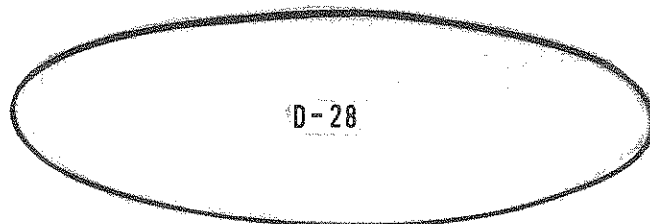
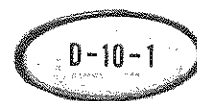
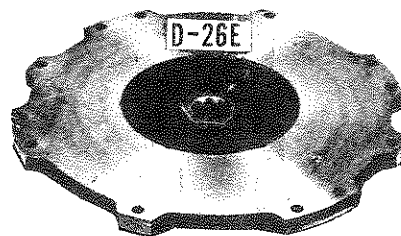
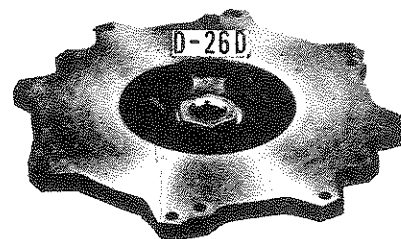
INDUSTRIAL AND PASSENGER APPLICATIONS

Dodge, DeSoto, Chrysler, Worthington, Chain Belt, Concrete Transport,

Challenge, Jaeger, Silent Hoist & Crane, Yale & Towne T. L. Smith



ILL.#	PART#	DESCRIPTION
1	D-1	NUT
2	D-2	LOCKPLATE
3	D-3	KEY
4	D-4	SNAP RING
5	D-5	SPRING
6	D-6	RETAINER
7	D-7	O-RING, special H.D.
8	D-8	SEAL, carbon (2 grooves)
	D-8A	" Early, no grooves
9	D-9	HOUSING
10	D-10	GASKET
11	D-11	BUSHING, large
12	D-12	BUSHING, small
13	D-13	DRAIN PLUG
14	D-14	GASKET
16	D-16	FIN
17	RG-146	RING GEAR, 146 teeth
18	TX-10	STUD, heat treated
19	D-19	LOCKWASHER, star
20	D-20	NUT, hardened
21	D-21	WASHER, special
22	D-22A	BEARING made to Fluid-Drive specifications
23	D-23	CAP, repair
24	D-24	SHIM, .010" select., special
25	D-25	SPACER, .130", special
26	D-26	PLATE, 9", 6 holes
	D-26A	PLATE, 9-1/4", 6 holes
	D-26B	PLATE, 10", 6 holes
	D-26C	PLATE, 11", 14 holes, use D-26D
	D-26D	PLATE, combination, 14 holes
	D-26E	PLATE, 12 holes
		ILLUSTRATED TO THE RIGHT
	D-10-1	SPACER SHIM. Use under D-10 to adjust clearance of D-9 housing if unit has been opened previously
	D-27 or TX-12L	RIVET, turbine shaft to turbine. Use 6
	D-28	SPACER RING Use between housing halves to compensate at weld area.
	D-29	TURBINE SHAFT, less bushings
	D-30	IMPELLER VANE, use 48
	D-31	TURBINE VANE, use 44





**T r i C o m p o n e n t
P r o d u c t C o r p o r a t i o n
9 7 3 B r o o k A v e .
B r o n x , N e w Y o r k
1 0 4 5 1 - 4 2 0 9**

www.tricomponent.com

sales@tricomponent.com

**8 0 0 - F O N E - T R I
8 0 0 - 3 6 6 - 3 8 7 4
7 1 8 - 4 0 2 - 2 4 0 0
F a x : 7 1 8 - 4 0 2 - 2 1 5 1**